

COMMISSIONER HANDBOOK
ONE HUNDRED AND TWENTY-FIRST GATHERING
OF
THE PRESBYTERY OF NEW HOPE
FEBRUARY 24, 2024



Cary Presbyterian Church
614 Griffis Street
Cary, NC 27511
(919) 467-8700
<http://www.carypresbyterian.org>

TABLE OF CONTENTS

| | |
|--|--------|
| One Hundred and Twenty-First Stated Gathering of Presbytery | 4 |
| Newcomer's Guide to Presbytery Meetings..... | 6 |
| Directions to Host Church..... | 8 |
| Campus Map | 9 |
| Hotels/Accommodation..... | 11 |
| History of Cary Presbyterian Church..... | 12 |
| Proposed Docket..... | 13 |
| Consent Agenda | 15 |
| Installation of Moderator-Elect | 16 |
| Report of Executive Presbyter | 17 |
| Report of Associate Presbytery..... | 29 |
| Report of Stated Clerk..... | 32 |
| Church Commissioners 2024/2025 | 34 |
| Report of Coordinating Body | 37 |
| Stated Clerk Job Description..... | 39 |
| Service of Commission for 226th General Assembly..... | 43 |
| Presbytery Budget 2024..... | 45 |
| Camp Albemarle Budget 2023 | 47 |
| Committee on Preparation for Ministry | 48 |
| Jooyoung Hong: Letter of Introduction for Candidacy | 49 |
| Service of Reception..... | 50 |
| Report of Commission on Ministry and Examinations and Transfers Sub-Commission | 51 |
| Core Values | 55 |
| Approval Authorities Matrix | 56 |
| Ministers' Attendance 2023 | 58 |
| Members-at-Large | 65 |
| Validated Ministries` | 66 |
| Pastor for Community Teaching Job Description | 67 |
| Statements of Faith and Biographical Sketches | |
| Heidi Biermann | 69, 70 |
| Rev. Nick Demuynck..... | 71, 73 |
| Jack Donovan | 74, 75 |
| Remona Dowell..... | 76, 77 |
| Rev. Howard Dudley | 78, 80 |
| Rev. John Fawcett | 81 |
| Rev. James M. Rand | 82, 84 |
| Announcements | |
| David Lamotte: An Evening of Stories & Songs | 85 |
| 2024 McPherson Lecturer: Willie James Jennings..... | 86 |
| Nominations and Representation | 87 |
| Nominations Brochure | 89 |
| Milner Commons Update | 91 |
| Board of Pensions: Elizabeth Little..... | 93 |

| | |
|---|------------|
| Matthew 25 Summit..... | 94 |
| Bills and Overtures/Resolutions: How to Submit to Presbytery | 98 |
| Overture/Concurrence: How to Submit to General Assembly | 99 |
| Parliamentary Procedures for Presbytery of New Hope..... | 103 |
| Parliamentary Procedures for Motions Chart | 105 |
| Presbytery of New Hope Guide to Acronyms..... | 106 |
| Presbytery of New Hope Staff Contact Sheet..... | 107 |
| Presbytery of New Hope Publications, Publicity, and Table Display Policy | 108 |

ONE HUNDRED AND TWENTY-FIRST STATED GATHERING OF PRESBYTERY

Registration

Please register on the presbytery website at the following link: <https://nhpresbytery.org/presbytery-meeting-registration/>. **The deadline for registration is Tuesday, February 20 by 5:00 p.m.**

Non-Attendance

Minister members (except those who are retired) are expected to present a reason for absence from the meeting, (Presbytery Bylaws Ref. 3.13c). Churches unable to be represented should also submit a request to be excused.

All requests for excused absences should be submitted to the stated clerk through Christine Kelson using the following links on the presbytery website:

ministers: <https://nhpresbytery.org/excused-absence-minister/>

churches: <https://nhpresbytery.org/excused-absence-church/>

You may also send an email to Christine at ckelson@nhpresbytery.org. Requests for excused absences must be received in advance of the meeting.

Commissioner Handbook/Meeting Materials

The handbook can be downloaded from the home page of the presbytery website at <https://nhpresbytery.org/>. **Please bring a copy of the handbook with you to the gathering.**

If you are planning to download the handbook to a device, please do this before the meeting to enhance Wi-Fi reception at the church.

Check-In

Check-in opens at 8:00 a.m. Upon arrival, please go directly to the check-in area.

Minister Members of New Hope

There will be a dedicated table for minister members of New Hope – **please check in here.**

Ruling Elder Commissioners and All Other Visitors

Please check in at the appropriate table (set up alphabetically by last name). If you did not pre-register, please sign in at the specially designated registration table.

NON-PERISHABLE DONATIONS

Attendees are asked to bring non-perishable food items, which will be donated to Dorcas ministries food pantry <https://dorcascnc.org/how-we-help/assistance/#tab-food-pantry>.

Worship Offering

Today's offering contributes to the work of The Caring Place. The Caring Place's mission is to help working families who are experiencing homelessness by teaching life skills for attaining independent living while providing short-term housing and support services to meet their individual needs. Clients

participate in a 16-week program in which they receive teaching and coaching about the skills required for self-sufficiency. About 80% of families who graduate from this program are living independently and gainfully employed a year later. It currently graduates about 35 families per year, but the wait list has doubled in recent years. The offering would support expanding the program to more families, and creating affordable housing for families who choose to continue with the Graduate Program, which lasts for a year beyond the initial 16 weeks.

Lunch

Please register your attendance online by the February 20 deadline if you would like lunch, including the vegetarian option. This is helpful to the host church for planning purposes. Meal tickets may be purchased at the host church during check-in on the morning of the meeting for \$10.00 **by cash only**. Lunch will include lasagna, accompanied by bread and salad, and a dessert. Both vegetarian/gluten-free lasagna and traditional lasagna will be served.

Child Care

Childcare reservations may be made when you register on-line for the gathering. Please prepare a lunch for your child. Contact the host church directly (919-467-8700) if your child has allergies and provide an appropriate lunch/snack. **Please let the host church know as soon as possible if you reserve childcare, but then do not require it.**

Wi-Fi Access

username: NewHopePresMtg
password: presbyterian221

The livestream and recording can be found here: <https://www.youtube.com/watch?v=IWqqxYbzdP4>.

This is a viewing service only and your attendance at the meeting will not be counted through viewing the broadcast. Voting and participating in the meeting is unavailable through this platform.

Cell Phones

Out of respect for others attending the meeting, all cell phones should be turned off or set to vibrate.

Parliamentary Procedures

Guidelines and a summary to parliamentary procedures of the Presbyterian Church (USA) can be found on pages 103 and 105 of the handbook. Motion forms will be at the stated clerk's table if you need to use one.

Mini Conference

Monday, July 22, 2024: NHP mini-conference at Westminster Presbyterian Church, Durham at 10:00 a.m. More details to follow.

Next Stated Gathering

Tuesday, July 23, 2024 : Westminster Presbyterian Church, Durham.

Disclaimer: The displays you see at any given presbytery meeting may or may not be endorsed by the Presbytery of New Hope.

A NEWCOMER'S GUIDE TO PRESBYTERY MEETINGS

WELCOME FIRST-TIME COMMISSIONERS

Despite rumors to the contrary, many really do enjoy the time of fellowship and sharing when our presbytery meets. However, if you have not been to such a meeting before, it may seem a little confusing at first. The goal of this guide is to make your participation more meaningful, for at presbytery meetings we have good news to share, successes to celebrate, helpful resources to publicize, important (and some not so important) decisions to make, plans to approve, and a wonderful family of 111 congregations to get to know better.

WHAT IS A PRESBYTERY?

A presbytery is the key governing body (council) in our denomination. There are 172 presbyteries in the Presbyterian Church (USA). Our presbytery includes 111 churches with 22,544 members through the North Carolina Piedmont and coast. The commissioners of a presbytery gathering consist of all the active and retired teaching elders and at least one ruling elder from each congregation. The stated clerk ensures there is an equal number of teaching and ruling elders who gather as commissioners at least three times a year.

WHAT DOES A PRESBYTERY DO?

A presbytery is responsible for the mission and government of the church throughout its area. "In partnership with sessions, the mission of our presbytery is to foster vital and faithful congregations to be effective witnesses for Jesus Christ." By combining resources, a presbytery can help each church enhance its ministry by assisting with the calling of pastors, teacher training, grants and loans, officer development, camping programs, conference retreats, mission trips, and many other support ministries.

WHEN DOES PRESBYTERY MEET?

There are three full-day stated (regular) meetings; the February and October meetings are on the 4th Saturday of the month, and the July meeting is on the 4th Tuesday of the month. Special meetings can be called as necessary, and presbytery committees and commissions meet throughout the year.

WHAT WILL HAPPEN AT THIS MEETING?

In advance of the meeting, all commissioners will have access to an electronic handbook of reports, proposed actions, and background information; this is called the *Commissioner Handbook*. The link to the handbook will be sent to your clerk of session prior to the meeting, who will then share it with you so that you may download it from the presbytery website. Please read these documents carefully, and be prepared to discuss and vote if necessary.

In general, you will experience the following:

- **Celebration:** Our day begins with worship. Ordinarily worship is led by the host church though there are exceptions at times. We will also welcome new ministers and give thanks for special achievements and for retirements, and pledge ourselves to better mission and witness as we join in the fellowship of committed Christians who represent our 111 congregations.
- **Information:** You will learn about lots of events and opportunities to share with your session and congregation: new programs, mission plans, available resources, etc. Be a good communicator when you are back home; make sure your session and congregation are kept informed.

- **Presbytery Procedures:** Much is fairly routine: adoption of the docket (order of consideration), approval of minutes, receiving reports, etc. Several routine housekeeping matters are put together in an omnibus motion, which is voted on as a unit (but you can remove any item for later discussion). Though rather unexciting, these matters are necessary.
- **Debate and Action:** At most meetings, there will be a few items that deserve extensive discussion. Though a committee or the Coordinating Body has reviewed each recommendation, it should nevertheless be carefully considered before you decide how to vote. If you do not understand what is happening, please ask the moderator to explain the matter currently before the presbytery. If you want to offer a motion, the stated clerk would be glad to help you draft it. Your role is to listen carefully, share in the debate if you feel led to do so, and then vote as the Holy Spirit leads you to understand what is best for Christ's Church.

As a commissioner, it is a privilege and responsibility to help guide this part of the Church of Jesus Christ.

Be prepared/ listen / pray / take notes / report back home.

Remember that you are helping our presbytery in a much valued and vital way to build up the Body of Christ, here in this part of North Carolina, to the greater glory of our Lord.

DIRECTIONS

CARY PRESBYTERIAN CHURCH, 614 GRIFFIS STREET, CARY, NC 27511

Please note that there has been considerable infrastructure work done by the City of Cary in the area surrounding the church over the past six months. These directions are written with the assumption that all routes are open and available and construction-free– if that will not be true at the time of the meeting, we will work to provide notice in the preceding week.

From the west (Greensboro, Asheville, Winston-Salem, Charlotte), traveling east on I-40

If traveling from Charlotte, take I-85 North to get on I-40 near Greensboro

Take exit 287 (Cary, Harrison Ave) and turn right on N Harrison Ave.

Continue following N Harrison Ave as it curves to the right and becomes Griffis St.

After 4.2 miles, CPC will appear on your right.

From the south (Fayetteville, Wilmington), traveling west on I-40

If traveling from Fayetteville, take I-95 North to get on I-40 near Benson

Take exit 291 (Cary Towne Blvd) and turn right, merging onto Cary Towne Blvd.

After 1.8 miles, turn left on Byrum St.

After 0.3 miles, turn left on Kildaire Farm Rd.

After 0.2 miles, turn right onto Shirley Dr.

After 0.5 miles, turn left onto Griffis St.

After 200 feet, CPC will appear on your right.

From the east (Greenville), traveling west on I-587

Continue traveling straight as I-587 becomes:

I-795 N toward Raleigh (near mile marker 22); continue for 4.5 miles

US-264 W (near mile marker 18); continue for 18.2 miles

US-264 W/US-64 W toward Raleigh (near mile marker 1); continue for 7.1 miles

I-87/US-264 W/US-64 (near mile marker 14); continue for 10.2 miles

I-87 S/I-440 E toward I-40/US-64 W/Durham/Benson (near mile marker 3); continue for 3.4 miles

I-40 W towards Durham (near mile marker 16)

After 9.6 miles, take exit 291 (Cary Towne Blvd) and turn right, merging onto Cary Towne Blvd.

After 1.8 miles, turn left on Byrum St.

After 0.3 miles, turn left on Kildaire Farm Rd.

After 0.2 miles, turn right onto Shirley Dr.

After 0.5 miles, turn left onto Griffis St.

After 200 feet, CPC will appear on your right.

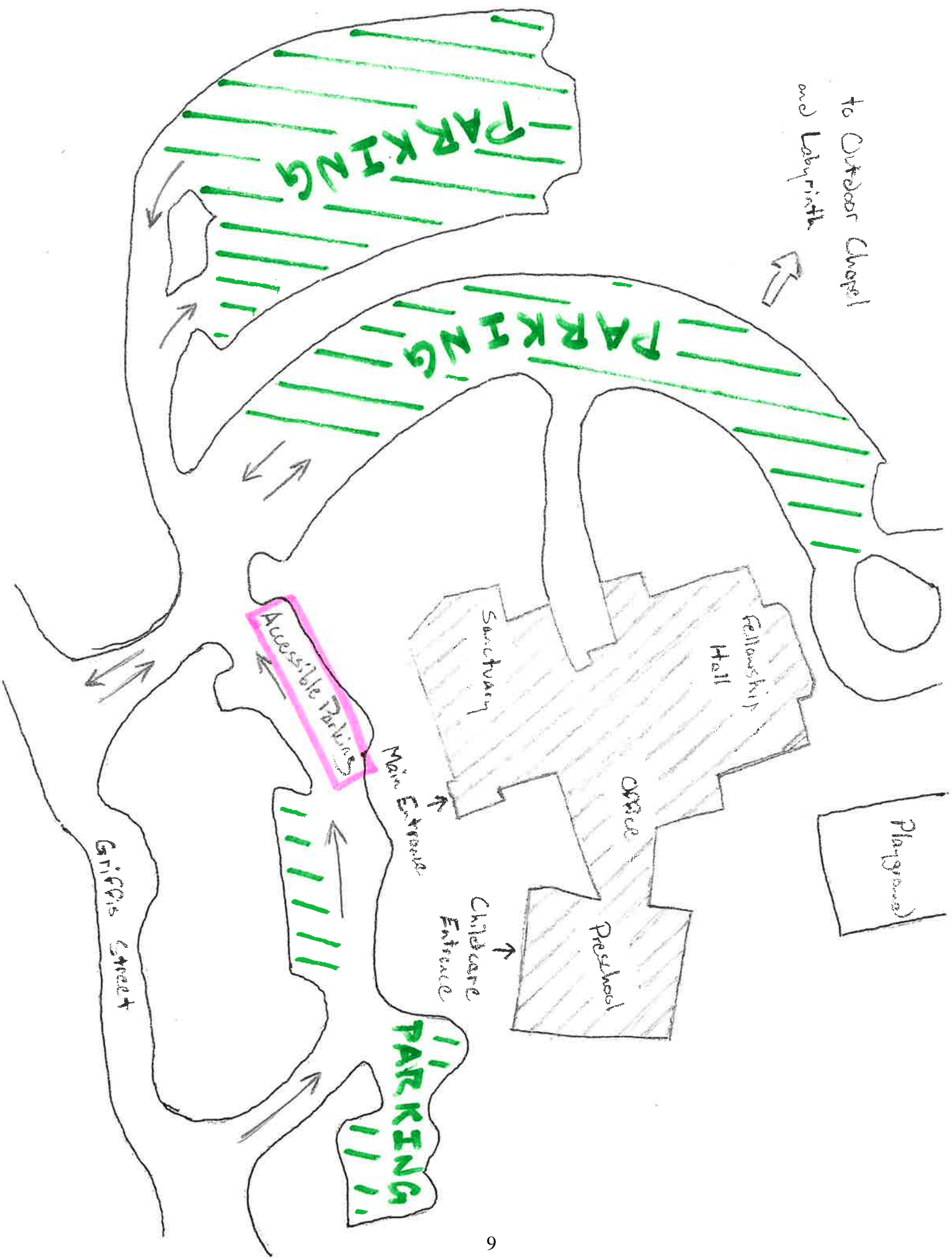
From the north (Henderson), traveling south on I-85

Take exit 178 (I-885/US-70 E towards Raleigh).

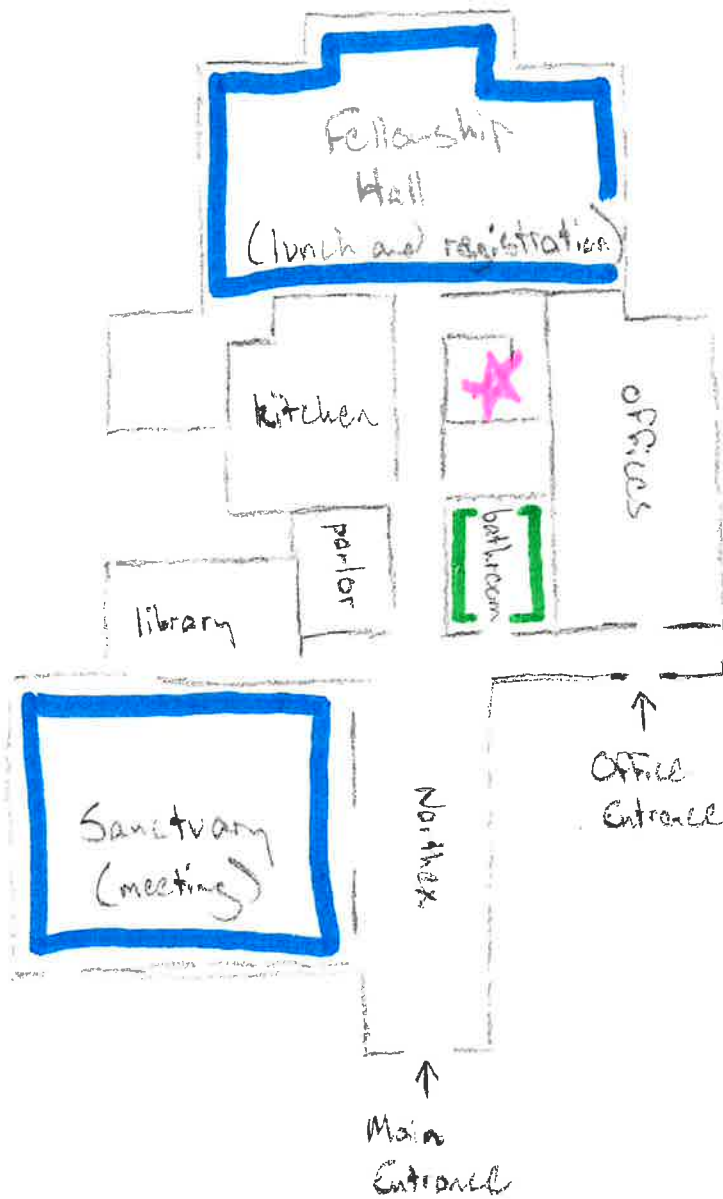
After 8.4 miles, take left exit 5A (I-40 E towards RDU Airport/Raleigh).

After 8 miles, take exit 287 (Cary, Harrison Ave) and turn right on N Harrison Ave.

After 4.2 miles, CPC will appear on your right.



UPPER (MAIN) LEVEL

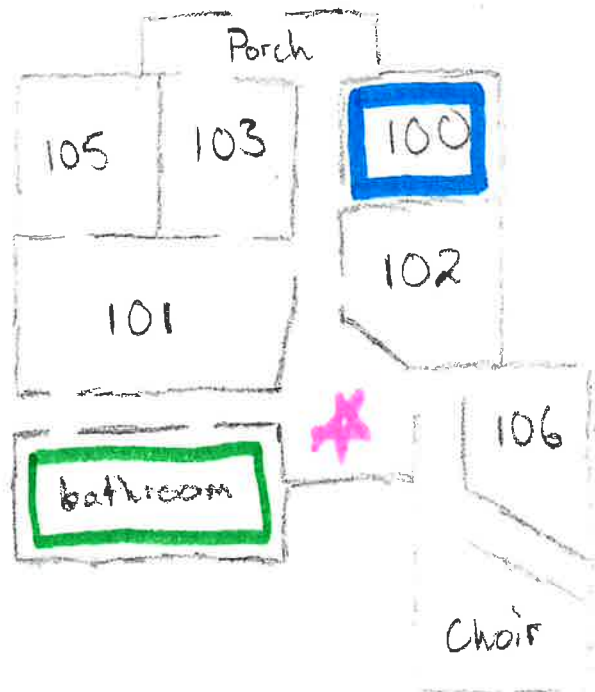


The stairs and elevator that connect the two floors are marked by *

Important locations are outlined in blue.

→ to Childcare

to Playground and Back Parking Lot



Restrooms are

outlined in green.

LOWER LEVEL

Hotels/Accommodation

Prices listed as of January 1, 2024.

| | |
|--|-------------|
| MainStay Suites Raleigh-Cary (3.8 miles from CPC) 919 468 4222 1020 Buck Jones Rd Raleigh, NC 27606 | \$67/night |
| Best Western Plus Cary Inn – NC State (3.1 miles from CPC) 919 481 1200 1722 Walnut St Cary, NC 27511 | \$85/night |
| Hampton Inn & Suites Raleigh/Cary I-40 (3.2 miles from CPC) 919 233 1798 111 Hampton Woods Ln Raleigh, NC 27607 | \$111/night |
| DoubleTree by Hilton Hotel Raleigh-Cary (3.9 miles from CPC) 919 239 4777 500 Caitboo Ave Cary, NC 27518 | \$118/night |
| Fairfield Inn & Suites by Marriott Raleigh Cary (3.2 miles from CPC) 919 301 8467 1120 Ledsome Ln Cary, NC 27511 | \$134/night |
| The Mayton (0.6 miles from CPC) 919 670 5000 301 S Academy St Cary, NC 27511 | \$386/night |

A History of Cary Presbyterian Church

In 1954, Cary, North Carolina was a very small town west of Raleigh when a survey by the denomination identified the need for a Presbyterian church in the area. By August of the same year, a steering committee led by The Reverend Charles E. Johnson arranged to hold services at what was then Cary High School on Academy Street (today the Cary Arts Center). The first worship service took place on September 5, 1954. A commissioning service was held on February 20, 1955 and Rev. Johnson became the pastor.

On March 1, 1955, ten acres of land on the site of an old dairy farm were purchased. A groundbreaking for the new church was held November 6, 1955 on the building site in Cary's Russell Hills community. Much of the labor and materials for the original structure was donated. On September 9, 1956, Cary Presbyterian's 67 charter members were able to attend the first worship service in the new sanctuary.

Cary Presbyterian began the first church-sponsored, state-approved kindergarten program in Cary in September 1958, soon followed by the first Boy Scout program in Cary.

During the 1960s, church membership had grown to more than 200 and an education wing was added to the original building.

During the next decades, CPC continued its outreach in the community and beyond. Members played an active role in establishing Christian Community in Action (now known as Dorcas Ministries), began a longstanding mission commitment to Appalachia Service Project, and supported mission work in Haiti, Guatemala, and Madagascar.

As Cary grew, CPC responded to the needs of a growing congregation and community with construction of a new sanctuary in the late 1980s and later, a renovation of the CPC Preschool and Christian Education facilities. Mission outreach continued with member trips to support disaster relief efforts in North Carolina, Louisiana, and Mississippi.

The 2001 building campaign included a new and expanded fellowship hall and a fully-outfitted kitchen, which enabled us to host not only church-sponsored programs but also community events like blood drives and programs for The Caring Place Ministry.

Our congregation retired the debt on our latest construction project in 2016 and is currently debt-free.

PROPOSED DOCKET
ONE HUNDRED AND TWENTY-FIRST STATED GATHERING
THE PRESBYTERY OF NEW HOPE
Cary Presbyterian Church, Cary, NC
February 24, 2024

| | | |
|-----------------------|--|--|
| 8:00 a.m. | REGISTRATION AND FELLOWSHIP <ul style="list-style-type: none">• Non-Perishable Food Collection• Displays | |
| 8:15-8:45 a.m. | ORIENTATION OF FIRST-TIME ELDER COMMISSIONERS | Room 102 |
| 9:00 a.m. | CALL TO ORDER <ul style="list-style-type: none">• Declaration of Quorum• Adoption of Docket• Land Acknowledgement• Seating of Corresponding Members• Approval of Consent Agenda• Welcome by Host Church• Welcome to Elder Commissioners Attending Presbytery for the First Time | Elder Wetonah Parker, Moderator |
| 9:15 a.m. | WE APPROACH GOD IN WORSHIP <p>The worship service will include the installation of the moderator, Rev. Anna Pinckney Straight, and the Lord's Supper The offering today will go to The Caring Place</p> | |
| 10:15 a.m. | STRETCH AND SET UP FOR BUSINESS MEETING | |
| | GOD'S WORK IN THE LARGER CHURCH | |
| 10:30 a.m. | EXECUTIVE PRESBYTER'S REPORT (Page 17) <ul style="list-style-type: none">• Annual Meeting of the Corporation | Rev. Bruce Grady |
| | ASSOCIATE PRESBYTER'S REPORT (Page 29) | Rev. Katie Cashwell |
| | STATED CLERK'S REPORT (Page 32) | Rev. Ed Johnson |
| 11:00 a.m. | REPORT OF COORDINATING BODY (Page 37) <ul style="list-style-type: none">• Service of Commission for 226th (2024) General Assembly Commissioners and YAAD• Finance and Property Committee | Rev. Joe Sandoval Elder Sue Regier Finance Administrator Amber Zapffel |
| 11:15 a.m. | COMMITTEE ON PREPARATION FOR MINISTRY (Page 48) | Rev. Brandon Melton |
| 11:30 a.m. | COMMISSION ON MINISTRY (Page 51) <ul style="list-style-type: none">• Healthy Boundaries• Preaching and Sermon Prep 101 | Elder Jerry Slaymaker |
| | Examinations and Transfers Sub-Commission <ul style="list-style-type: none">• For Ordination• For Transfer | Rev. Rebecca Gillespie |

| | | |
|-------------------------|--|---|
| Noon | PRAYER AND LUNCH • Associate Pastors Are Invited to Gather in Room 100 | Rev. Betty Berghaus |
| 12:55 p.m. | RECONVENE IN THE SANCTUARY | |
| 1:00 p.m. | AFTER LUNCH ANNOUNCEMENTS • David LaMotte Concert • Presbyterian Association of Musicians, Mid-Atlantic Region • NHP Young Clergy Initiative | Rev. Debbie Kirk Mr. Harry Jansen Rev. Esther Hethcox |
| 1:15 p.m. | NOMINATIONS AND REPRESENTATION (Page 87) | Elder Ray Watson |
| 1:25 p.m. | CHURCH DEVELOPMENT AND EVANGELISM | Rev. Hannah Trawick |
| 1:35 p.m. | BLACK CAUCUS REPORT | Rev. Tolokun Omokunde |
| 1:45 p.m. | SELF DEVELOPMENT OF PEOPLE REPORT | Rev. Duane Hix |
| 1:55 p.m. | REPORT OF THE STATED CLERK SEARCH COMMITTEE | Rev. Katie Crowe |
| 2:05 p.m. | REPORT OF THE ASSOCIATE PRESBYTER SEARCH COMMITTEE | Rev. Lisa Hebacker |
| 2:15 p.m. | MILNER COMMONS UPDATE (Page 91) | Rev. Ed Johnson |
| 2:25 p.m. | BOARD OF PENSIONS (Page 93) | Ms. Elizabeth Little |
| 2:35 p.m. | DIR. OF ADMISSIONS – UNION SEMINARY CHARLOTTE | Ms. Ashlee Anderson |
| 2:45 p.m. | MATTHEW 25 SUMMIT PRESENTATION (Page 94) | Summit Attendees |
| 2:55 p.m. | OTHER BUSINESS • Unfinished Business • A Word of Gratitude to Our Worship Host • Report of the Stated Clerk: Attendance | Rev. Anna Pinckney Straight |
| GOD SENDS US OUT | | |
| 3:00 p.m. | ADJOURNMENT AND CLOSING PRAYER | |

**Please complete your stated gathering questionnaire online
at the following link:**

<https://forms.office.com/r/cjVnGRgGSi>

**The NHP mini-conference is July 22, 2024 at Westminster Presbyterian Church, Durham
at 10:00 a.m.**

**The next stated gathering is July 23, 2024 at Westminster Presbyterian Church, Durham
at 9:00 a.m.**

ITEMS FOR CONSENT AGENDA

February 24, 2024

The presbytery will vote in a single action on everything in the consent agenda **(all items contained within boxes on designated pages and the stated clerk job description on pages 39-42.** However, any member of presbytery may request to have any item lifted from the consent agenda for explanation, debate, or a separate vote.

The following communications will be voted on with this consent agenda:

- Report of Stated Clerk Page 32
- Report of Coordinating Body Page 38
 - Stated Clerk Job Description Pages 39-42
- Report of Nominations and Representation Pages 87-88

INSTALLATION OF MODERATOR-ELECT
Rev. Anna Pinckney Straight
The Presbytery of New Hope
February 24, 2024

INSTALLATION

Moderator: Elder Wetonah Parker
Anna, God has called you to particular service as Moderator of the Presbytery of New Hope. Show your purpose by answering these questions. Who is your Lord and Savior?

Moderator-Elect – Anna: Jesus Christ is my Lord and Savior.

Moderator: Will you be Christ's faithful disciple, obeying his word and showing his love?

Moderator-Elect – Anna: I will.

Moderator: Do you welcome the responsibility of this service because you are determined to follow the Lord Jesus, to love neighbors, and to work for the reconciling of the world?

Moderator-Elect – Anna: I do.

Moderator: Will you serve the people with energy, intelligence, imagination, and love, relying on God's mercy and rejoicing in the power of the Holy Spirit?

Moderator-Elect – Anna: I will.

Moderator: Do you, members of the Presbytery of New Hope, confirm the call of God to our sister Anna Pinckney Straight as moderator in the service of Jesus Christ?

Presbytery: We do.

Moderator: Will you support and encourage her in this ministry?

Presbytery: We will.

PRAYER

DECLARATION OF INSTALLATION

Elder Wetonah Parker

Report of the Executive Presbyter

121st Stated Gathering
of
The Presbytery of New Hope

February 24, 2024

Cary Presbyterian Church
614 Griffis Street, Cary, NC 27511

Rev. Dr. Bruce T. Grady

bgrady@nhprebystery.org



“Jesus, remember me when
You come into Your kingdom.”

Luke 23:42



The Presbytery
OF NEW HOPE

Mission of New Hope Presbytery



In response to God's call in the life, death, and resurrection of Jesus Christ, the mission of the Presbytery of New Hope is to enable local congregations, and presbytery as a whole, to function effectively as the body of Christ by actively exploring, facilitating, equipping, and establishing appropriate ministries with the covenant community and beyond.



Letter from the Executive Presbyter

Good morning,

Moderator Anna Pinckney Straight, commissioners, and guests of the 121st stated gathering of the Presbytery of New Hope.

I bring you greetings in the magnificent name of Jesus Christ, our Lord and Savior! One year has passed since you elected me to be your executive presbyter and I count it a blessing to be in this service.

Last year (2023) was a productive transition for both the presbytery and my ministry among you. I have focused on listening and expanding a network of conversational partners. In June 2023, the executive team and I launched my presbytery-wide listening tour, Table Talks, which included gatherings at Howard Memorial Presbyterian Church (Tarboro), Faith Presbyterian Church (Goldsboro), North Raleigh Presbyterian Church (Raleigh), and Oxford Presbyterian Church (Oxford).

Through ongoing interactions with congregations, committees, commissions, and networks of NHP, we are cultivating mutual trust, understanding, and agape. I am learning more about our presbytery's trends and post-global pandemic shifts.

Beyond New Hope, I participated in dialogue with the greater PCUSA via the Presbyterian Leadership Forum, the Association of Mid-Council Leaders, and the stated gathering of the Synod of the Mid-Atlantic (September 11-13, 2023, Massanetta Springs Conference Center).

On October 9-12, 2023, Katie Cashwell (temporary associate presbyter of small churches and technology), Ed Johnson (temporary stated clerk), and I attended the Polity, Benefits, and Mission Conference, sponsored by the Office of the General Assembly, Board of Pensions, and Presbyterian Mission Agency. We had the opportunity to connect with other mid-council leaders from across the nation and gained new tools for equipping the congregations of the Presbytery of New Hope.

On January 15 -18, 2024, I joined 15 members of NHP to participate in the PMA Matthew 25 Summit (Atlanta) with over 350 members of the PC(USA). The summit provided inspirational clarity around where the Holy Spirit is leading our denomination and it affirmed for me NHP's decision in 2020 to become a Matthew 25 presbytery.

I continue to give thanks for the wonderful staff at the presbytery office. Christine Kelson, Shauna Villela, Amber Zapffel, Katie Cashwell, and Ed Johnson are gifted, compassionate, and competent individuals who work tirelessly to ensure that the mission and ministry of NHP is supported to the best of their ability.

I would also like to share NHP-related data over the past year. In 2023 we had a total of 111 churches. Of those, 65 are 100 members or less. None of the churches were closed, nor did any leave the denomination. There were 306 active teaching elders in 2023 (including those serving a church, validated ministries outside of the congregation, members-at-large, and honorably retired). We have 15 racial/ethnic congregations including 1 Latin(x), 3 Korean, and 11 African American.

Over the years, we have been and continue to be in the top 20 of the largest presbyteries in the PCUSA. We currently shepherd 18 candidates under care or as inquirers.

Our new worshipping communities/fellowships include: Santuario, Farm Church, and Jubilee Fellowship. We ordained the following ministers: Paul Burgess, Esther Hethcox, Nancy Myer, Jacquelyn Rodriguez, Kim Rubish, and Haley Stephenson. We also received those who joined our presbytery: Baron Ashfield, Jeff Kisner, Allan Poole, Jim Rand, Patrick Ryan, and Emily Wilkes.

The following teaching elders who partnered with us in ministry have now moved on to a different presbytery: Matt Baker, Matt Copple, Lonnie Darnell, Delton Farmer, British Hyrams, Cathy Mooney, Maren Sonstegard-Spray, Fred Thrower, Jody Welker, and Charles Wiley.

The following ministers retired: Carol Gregg, Gloria Johnson, Robert Johnson, Ed McLeod, Tolokun Omokunde, Lori Pistor, and Candice White.

2023 was the tenth year we engaged in our life together – Passion Driven Ministry. Ten (10) grants were awarded for 2023.

In conclusion, I have observed exciting kingdom service throughout NHP and it makes my heart glad. We are a connectional body, united through the covenant of Jesus Christ. The Lord is calling us to greater public witness and this transformation requires a new mindset, skill set, tool set, and soul-set. All of this is possible through the Holy Spirit.

In Acts 1:8, Jesus said to his disciples **“But you will receive power when the Holy Spirit has come upon you, and you will be my witnesses in Jerusalem, in all Judea and Samaria, and to the ends of the earth.”**

Letter from the Executive Presbyter

NHP's strategic planning team is prayerfully crafting a faithful response to what we have discerned via online surveys, Table Talk (group interviews), Holy Cow, committee retreats, and our decision to become a Matthew 25 presbytery. May the Lord bless, guide, and keep us on this adventurous journey!

Shalom,

Bruce T. Grady

Rev. Dr. Bruce T. Grady, EdD

Executive Presbyter

2022 McDonald Lane Raleigh, NC
27604

919-348-2918

bgrady@nhpresbytery.org

Focus Areas:



1 Building congregational vitality

2 Dismantling structural racism

3 Eradicating systemic poverty

Executive Presbyter's Recent Activities



2023

Nov 2

**Bruce Grady and
Jamie Ashmore at
the CPM Meeting**



Nov 8

**EP at the COM
Meeting**



Nov 11

Bruce and Ed participate in the new CLC training led by Manuel Silva



Bruce and Ed pictured with leaders from Coastal Carolina Presbytery. New Hope and Coastal Carolina partnered together on November 11 at Highland Presbyterian Church in Fayetteville to host a training on the new Church Leadership Connection system, led by Manuel Silva from the Office of the General Assembly.

Nov 12

Bruce preached 157th Anniversary of First United Presbyterian Church



Bruce Grady preached at the 157th anniversary of First United Presbyterian Church in Charlotte on November 12. FUPC is pastored by Delton Farmer, a former member of our presbytery and previous pastor of Cotton Memorial Presbyterian Church. Also in attendance was Rev. Jan Edmiston, general presbyter of Charlotte Presbytery.

Nov 13

Bruce engages session of Blacknall PNC



Nov 18

Bruce welcomes participants at NHP's Middle School Retreat at Camp Kanata



Nov 19

136th Anniversary Covenant Presbyterian Church



On Sunday, November 19, Rev. Dr. Bruce Grady joined Pastor Lakesha Bradshaw Easter in the celebration of the 136th anniversary of Covenant Presbyterian Church (Durham, NC).

Dec 14

The EP celebrates Rev. Gun Ho Lee's 20 years of pastoral ministry at Greenville Korean Presbyterian Church

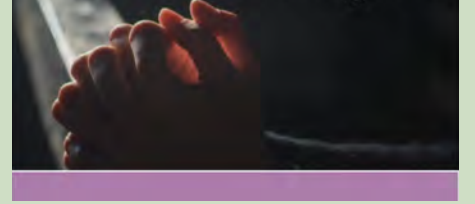


On December 3, Bruce Grady celebrated Jesus Christ and Rev. Gun Ho Lee's 20 years of pastoral ministry at Greenville Korean Presbyterian Church, Una Iglesia Para Todos, and Peace Presbyterian Church. May the Lord bless and guide him into his next chapter!

Dec 31

NHP Watch Night Prayer Service with the EP

Call to Prayer



The Executive Presbyterian led a "Watch Night Service" (Virtual Prayer Gathering) for the Presbytery of New Hope.

2024

Jan 11

EP meets with the Campus Ministry Committee



Jan 15 -18

PCUSA's Matthew 25 Summit



Participants from the Synod of the Mid-Atlantic at the Summit.

Executive Presbyterian, Bruce Grady, and fifteen members from the NHP participated in the PCUSA's Matthew 25 Summit at New Life Presbyterian Church in Atlanta (January 15 - 18, 2024). The Matthew 25 Summit brought mid-councils, churches, and individuals together for a week of innovation. What does it mean to eradicate poverty; how can we begin dismantling systemic racism; how will we know if we are building a vital congregation?



1. Bruce Grady and Jay Cummins (Hudson Memorial Presbyterian Church, Raleigh).

2. Dr. Diane Moffett, president and executive director of the PMA, welcomes leaders from across the PCUSA.

3. Over 350 participants gathered at New Life Presbyterian Church (Atlanta, GA) for the PCUSA's 2024 Matthew 25 Summit.

4. Dr. William Yoo, professor at Columbia Theological Seminary, delivered a lecture at the Matthew 25 Summit.

Jan 28

Bruce preached at First Pres Wilson



On Sunday (January 28), NHP Executive Presbyterian Bruce Grady had a wonderful time in worship with First Presbyterian Church Wilson.

Report of the Executive Presbyter



The Presbytery OF NEW HOPE



Rev. Dr. Bruce T. Grady
bgrady@nhprebystery.org

Presbytery of New Hope
2022 McDonald Lane Raleigh, NC 27608

REPORT OF ASSOCIATE PRESBYTER

REV. KATIE CASHWELL

Greetings friends!

The late professor Rev. Dr. Katie G. Canon adjourned her classes at Union Presbyterian Seminary with this prayer:

*Show us the way.
Show us the way not to
fortune nor fame,
And not to win laurels
or praise for our name.
But show us how to
tell The Great Story,
how to live The Great Story.
That thine is the commonwealth, the power, and the glory. Amen.*

As the associate presbyter for technology (and small churches) I think a lot about The Great Story and, especially, how to tell The Great Story. When we talk about technology, we are really talking about communicating, sharing, and storytelling. Technology is a means to an end. Technology gives us opportunities, through a variety of platforms, to share the stories of our ministries, our congregations, and most importantly, the good news of God's redeeming love for the world.

If we believe that the Church is called to be in the world, then we must share with the world what the Church is and equip the storytellers to do the job. Our congregations need effective communication tools so that they can tell their stories. Leaders need to be energized to share the good news of the Gospel outside the walls of the church sanctuaries and beyond their churches' property lines.

Thirteen percent of our churches are Matthew 25 congregations. When one of them tells the story of repurposing its church property to house an immigrant family, it is telling the story of the Church dismantling structural racism. One of our small churches is producing a podcast, supported by a small church grant, so when it highlights this ministry, it is telling the story of a Church building vitality. One of our congregations serves 600 people every

Wednesday afternoon in its free food pantry, so when it broadcasts this ministry, it is telling the story of a congregation working to eradicate poverty. These are just a few of countless examples of our presbytery showing us how to tell The Great Story, how to live The Great Story.

You will hear from me on February 24 about three new tools we are using in the presbytery to tell our story. The presbytery has a new branding logo, a new website will launch in March, and I'll share a story of two of our small congregations that are discerning how to share a pastor and how implementing new technology is a key part of that discernment process. These two churches remind me of the many ways that the Matthew 25 initiative can be lived out in our congregations, sometimes in surprising ways. These two churches are technology novices in most respects, but through the power of the Holy Spirit, a commitment to being the connectional church together, and a reliance on their shared foundation in Christ, they are building congregational vitality.

I look forward to our time together at the 221st stated gathering. Below is a list of ongoing, recent, and future activities in my ministry with the presbytery.

Grace and Peace,

Katie

Ongoing

- Staff support to Church Development & Evangelism Committee
- Staff support to Commissioned Ruling Elder Team
- Supervision of pulpit supply coordinator
- Facilitating conversations among churches regarding shared ministry
- Working with stated clerk and Commission on Ministry to clarify various policies and processes
- Overseeing digital communication platforms in the office
- Strategic planning meetings with the Coordinating Body and executive team

Since the last presbytery gathering

- Panelist for Small Church & Rural Ministry Webinar, hosted by Union Presbyterian Seminary

- Led a session retreat for Outer Banks Presbyterian Church
- Convened planning team for a Preaching 101 webinar for ruling elders
- Convened planning team for 2024 Small Church Gathering
- Convened and supported shared ministry conversation between Kenly Presbyterian and Spring Hill Presbyterian, and Cann Memorial and FPC Edenton, led by church consultant from Pneumatrix
- Preached at Grace Chapel Community Church
- Preached at Spring Hill Presbyterian Church
- Preached at Pinetops Presbyterian Church
- Member of the administrative commission to install Rev. Anne Galliher, WMPC
- Organized database training sessions for the presbytery staff
- Contracted and collaborated with Digital Congregations for new branding and website building
- Moved all office phone communications to Microsoft Teams
- Attended Fresh Expressions Small Church Week (virtual)

Looking ahead

March

- Attend the 2024 Association of Smaller Congregations Annual Conference
- Attend the North Carolina Rural Center Summit
- Launch new presbytery website!
- Preach at Calvary Presbyterian Church in Swan Quarter
- Preach at Saint Andrews Presbyterian Church in Henderson

April

- Week of continuing education
- Presentation to Presbyterian Women in the Presbytery (PWP) Spring Gathering at West Haven Presbyterian Church

May

- Union Presbyterian Seminary Sprunt lectures

June

- Synod of Mid-Atlantic PW Gathering (virtual)
- General Assembly committee meetings (virtual)
- Week of vacation

REPORT OF STATED CLERK

Rev. Ed Johnson

It is recommended that the following be received and become a part of the permanent record of this one hundred-and-twenty-first stated gathering.

INFORMATION

1. Received the minutes of the commission to install Rev. Bruce Grady as the executive presbyter of the Presbytery of New Hope on September 24, 2023.
2. Received the minutes of the commission to ordain and install Nancy Myer at University Presbyterian Church on November 12, 2023.
3. Received the minutes of the commission to install Rev. Patrick Ryan at First Presbyterian Church, New Bern on January 14, 2024.
4. Received the minutes of the commission to ordain Paul Burgess at Cary Presbyterian Church on January 20, 2024.
5. Received the minutes of the commission to install Rev. Anne Galliher at White Memorial Presbyterian Church, Raleigh on February 4, 2024.

RECOMMENDATIONS

1. Addressing imbalance between resident ministers and elders. At the beginning of every year, when the number of ministers residing within the bounds of the presbytery has been established, the clerk shall assign additional elder commissioners in the following way:
 - An additional elder commissioner shall be assigned to each racial ethnic church.
 - Exempt staff members who are elders shall be eligible.
 - All lay members of coordinating body who are elders shall be eligible.
 - All certified educators who are elders shall be eligible.
 - All commissioned ruling elders serving churches shall be eligible.
 - Churches with membership up to 300 will be given one commissioner.
 - Additional elders will be assigned as follows: 301-1,000 = 2 elders; 1,001-1,500 = 3 elders; 1,500-2,000 = 4 elders; 2,001-3,000 = 5 elders. Beyond 3,001 members there shall be an additional elder representative for each 1,000 additional active members or major fraction thereof.
 - Additional assignments of elder commissioners will be given to churches having one elder on an alphabetical rotating basis.

As of December 31, 2023, there were 175 eligible ministers residing within the bounds of the presbytery. Therefore for 2024 we recommend that there be 175 elder commissioners and 175 minister commissioners (see attachment #1, page 34).

CONGRATULATIONS TO

1. Rev. Katie Crowe, who received an Excellence in Public Service award on October 29, 2023.
2. Rev. Nancy Myer, ordained and installed at University Presbyterian Church on November 12, 2023.
2. Rev. Patrick Ryan, installed at First Presbyterian Church, New Bern on January 14, 2024.
3. Rev. Paul Burgess, ordained at Cary Presbyterian Church on January 20, 2024.
4. Rev. Anne Galliher, installed at White Memorial Presbyterian Church, Raleigh on February 4, 2024.

PRAYERS FOR

1. Rev. Karen Dukes (HR), diagnosed with pancreatic cancer.
2. Rev. Tolokun Omokunde (HR), who experienced a heart attack.
3. Rev. Jacalyn Thomas (MAL), whose brother-in-law underwent hip-replacement surgery.
4. Rev. John Speight (HR), who was in a car accident.
5. The family of Ruling Elder Martha Morton (Oak Hill Presbyterian Church), who died November 11, 2023.

CONDOLENCES TO

1. Rev. Greg Gregory (HR) on the death of his wife, Bobi, on January 18, 2024.

Report of Stated Clerk Attachment #1
Number of Church Commissioners for July 2024 through February 2025

| Church | City | Active Members | 2024 Commissioners |
|--------------------------|----------------|----------------|--------------------|
| BEAR GRASS | WILLIAMSTON | 26 | 1 |
| BEREA | FOUR OAKS | 19 | 1 |
| BETHANY | WILSON | 22 | 1 |
| BETHLEHEM | MEBANE | 46 | 1 |
| BETHLEHEM | ROCKY MOUNT | 33 | 1 |
| BLACKNALL MEMORIAL | DURHAM | 512 | 2 |
| BROOKSTON | HENDERSON | 12 | 1 |
| BUTNER | BUTNER | 16 | 1 |
| CALVARY | SWAN QUARTER | 32 | 1 |
| CALVARY | WILSON | 86 | 2 |
| CANN MEMORIAL | ELIZABETH CITY | 57 | 1 |
| CARY | CARY | 456 | 2 |
| CENTER RIDGE | KENLY | 18 | 1 |
| CHURCH OF RECONCILIATION | CHAPEL HILL | 157 | 1 |
| COBB MEMORIAL | TARBORO | 34 | 1 |
| CORNERSTONE | CARY | 220 | 1 |
| COTTON MEMORIAL | HENDERSON | 62 | 2 |
| COVENANT | DURHAM | 214 | 2 |
| COVENANT | WENDELL | 114 | 1 |
| DAVIE STREET | RALEIGH | 141 | 2 |
| DISCOVERY CHURCH | CLAYTON | 70 | 1 |
| DURALEIGH | RALEIGH | 291 | 3 |
| DURHAM | DURHAM | 47 | 1 |
| DURHAM FIRST | DURHAM | 542 | 2 |
| EBENEZER | NEW BERN | 29 | 2 |
| EDENTON FIRST | EDENTON | 26 | 2 |
| EFLAND | EFLAND | 26 | 2 |
| ENO | CEDAR GROVE | 23 | 1 |
| ERNEST MYATT | RALEIGH | 55 | 1 |
| FAIRFIELD | EFLAND | 7 | 1 |
| FAITH | GOLDSBORO | 106 | 2 |
| FALKLAND | FALKLAND | 50 | 1 |
| FARMVILLE | FARMVILLE | 141 | 1 |
| FOUNTAIN | FOUNTAIN | 11 | 1 |
| FUQUAY-VARINA | FUQUAY-VARINA | 218 | 1 |
| GARNER FIRST | GARNER | 122 | 1 |
| GENEVA | OXFORD | 37 | 1 |
| GOLDSBORO (Korean) | GOLDSBORO | 16 | 2 |
| GOLDSBORO FIRST | GOLDSBORO | 324 | 2 |
| GRACE CHAPEL COMMUNITY | PINETOPS | 8 | 1 |
| GREENVILLE FIRST | GREENVILLE | 553 | 2 |
| GREENVILLE KOREAN | WINTERVILLE | 27 | 2 |
| HEBRON | OXFORD | 7 | 1 |
| HENDERSON FIRST | HENDERSON | 119 | 1 |
| HILLSBOROUGH | HILLSBOROUGH | 121 | 1 |
| HOWARD MEMORIAL | TARBORO | 319 | 2 |

| | | | |
|-------------------------------|------------------|-------|---|
| HUDSON MEMORIAL | RALEIGH | 655 | 2 |
| IGLESIA PRESBYTERIANA EMANUEL | DURHAM | 73 | 2 |
| KENLY | KENLY | 25 | 1 |
| KINSTON FIRST | KINSTON | 176 | 1 |
| KIRK OF HOLLY SPRINGS | HOLLY SPRINGS | 66 | 1 |
| KIRK OF KILDAIRE | CARY | 855 | 2 |
| LITTLE RIVER | HURDLE MILLS | 116 | 1 |
| LITTLETON | LITTLETON | 13 | 1 |
| MACCLESFIELD | MACCLESFIELD | 25 | 1 |
| MORTON MEMORIAL | ROCKY MOUNT | 25 | 1 |
| MT. BETHEL | DURHAM | 123 | 1 |
| MT. OLIVE | MT OLIVE | 150 | 1 |
| MT. PISGAH | ROCKY MOUNT | 35 | 2 |
| MT. PLEASANT, W.S. | WILLOW SPRINGS | 51 | 1 |
| NAHALAH | SCOTLAND NECK | 18 | 1 |
| NORTH CAROLINA KOREAN | DURHAM | 12 | 2 |
| NEUSE FOREST | NEW BERN | 21 | 1 |
| NEW BERN FIRST | NEW BERN | 780 | 2 |
| NEW HOPE | CHAPEL HILL | 179 | 1 |
| NORTH RALEIGH | RALEIGH | 257 | 1 |
| NUTBUSH | TOWNSVILLE | 39 | 1 |
| OAK GROVE | MIDDLESEX | 50 | 1 |
| OAK HILL | OXFORD | 8 | 1 |
| OAKLAND | CLAYTON | 208 | 1 |
| OUTER BANKS | KILL DEVIL HILLS | 210 | 1 |
| OXFORD | OXFORD | 89 | 1 |
| PEACE | WINTERVILLE | 99 | 1 |
| PINETOPS | PINETOPS | 27 | 1 |
| PLAINVIEW | ANGIER | 33 | 1 |
| RALEIGH FIRST | RALEIGH | 1,155 | 3 |
| ROANOKE ISLAND | MANTEO | 40 | 1 |
| ROANOKE RAPIDS FIRST | ROANOKE RAPIDS | 86 | 1 |
| ROCKY MOUNT FIRST | ROCKY MOUNT | 288 | 2 |
| ROXBORO | ROXBORO | 88 | 1 |
| SAINT ANDREWS, RALEIGH | RALEIGH | 808 | 2 |
| SMITHFIELD FIRST | SMITHFIELD | 176 | 1 |
| SPRING HILL | LUCAMA | 120 | 1 |
| ST. ANDREWS, HENDERSON | HENDERSON | 37 | 1 |
| ST. GILES | RALEIGH | 228 | 1 |
| ST. JAMES | SNOW HILL | 14 | 2 |
| ST. PAUL | LOUISBURG | 25 | 2 |
| STANLEY WHITE | ROANOKE RAPIDS | 13 | 1 |
| TIMOTHY DARLING | OXFORD | 73 | 2 |
| TRINITY | RALEIGH | 145 | 1 |
| TRINITY AVENUE | DURHAM | 417 | 2 |
| UNITY | NEWTON GROVE | 113 | 1 |
| UNIVERSITY | CHAPEL HILL | 1,215 | 3 |
| WAKE FOREST | WAKE FOREST | 556 | 2 |

| | | | |
|------------------------------------|----------------|----------------------|-------------------|
| WANOCA | WASHINGTON | 46 | 1 |
| WARRENTON | WARRENTON | 8 | 1 |
| WASHINGTON FIRST | WASHINGTON | 222 | 1 |
| WEST HAVEN | ROCKY MOUNT | 67 | 1 |
| WEST NEW BERN | NEW BERN | 47 | 1 |
| WEST RALEIGH | RALEIGH | 282 | 1 |
| WESTERN BOULEVARD | RALEIGH | 224 | 1 |
| WESTMINSTER, DURHAM | DURHAM | 942 | 2 |
| WESTMINSTER, LUCAMA | LUCAMA | 12 | 1 |
| WESTMINSTER, RALEIGH | RALEIGH | 49 | 1 |
| WHITE MEMORIAL, RALEIGH | RALEIGH | 4,433 | 6 |
| WHITE MEMORIAL, W.S. | WILLOW SPRINGS | 63 | 1 |
| WHITE ROCK | KINSTON | 33 | 2 |
| WILLIAM AND MARY HART | TARBORO | 42 | 1 |
| WILLIAMSTON | WILLIAMSTON | 16 | 1 |
| WILSON FIRST | WILSON | 470 | 2 |
| YOUNG MEMORIAL | MANSON | 1 | 1 |
| <u>Sub-Total</u> | | <u>22,544</u> | <u>154</u> |
| Exempt Staff Elders | | | 3 |
| Certified Educators Who Are Elders | | | 6 |
| Elder Members of Coordinating Body | | | 3 |
| Commissioned Ruling Elders | | | 9 |
| Total | | 22,544 | 175 |

REPORT OF COORDINATING BODY

Rev. Joe Sandoval, Moderator

Information

1. The Coordinating Body is receiving updates from the Milner Commons Mission Committee on the construction of the Milner Commons Affordable Senior Housing facility. The Body held its November 2023 meeting at the Milner Commons site.
2. The Coordinating Body continues to look at the processes in place for awarding grants to congregations and presbytery-hosted action teams with the thought of looking for opportunities to standardize and streamline those processes.
3. The Coordinating Body is looking at formalizing the role of the Healthy Boundaries group.
4. The Coordinating Body is discussing the Stated Clerk job description. The description will be addressed at the upcoming called Coordinating Body meeting.
5. The Coordinating Body continues to work with the Executive Presbyter on the shape of the presbytery staff.
6. The Coordinating Body approved a Passion Driven Ministry Grant proposal from White Memorial in Willow Spring.

Coordinating Body Approved the Following

1. The Coordinating Body approved the minutes of the October 28, 2023 stated gathering of presbytery.
2. The Coordinating Body authorized signers for the new PNC checking account: Bruce Grady, Executive Director; Edward R. Johnson, Officer/Stated Clerk; Amber Zapffel, Financial Administrator; Wetonah Rice Parker, Vice President/Trustee; Susan M. Regier, Chair of Finance and Property Committee, Treasurer; Cathryn Church Norman, Officer/Trustee.
3. The Coordinating Body approved a grant to the Peacemaking Network of \$2,000 for registrations for individuals wanting to attend the Matthew 25 Summit in Atlanta on January 16.
4. The Coordinating Body heard a request from the Committee on Preparation for Ministry to modify the constitution of the committee so that it will be a commission of presbytery. The Coordinating Body approved the following resolution as a recommendation to presbytery:

“To create a Commission on Preparation for Ministry to replace the current Committee on Preparation for Ministry for the Presbytery of New Hope. In compliance with G-3.0109 of the Book of Order, this commission shall be granted authority to examine and vote on inquirers under care on behalf of the Presbytery for advancement to the candidacy phase. If the examination is sustained, the time for their year-long candidacy would begin on the date of the Commission’s affirmative vote. Candidates shall be received and welcomed on the floor of Presbytery as is customary and ideally at its next meeting.”

5. Approved the 2024 presbytery budget.
6. Approved the job description of the presbytery’s Stated Clerk position as a recommendation to the presbytery.

Recommendations

That the presbytery approve the following: “That a Commission on Preparation for Ministry be created to replace the current Committee on Preparation for Ministry for the Presbytery of New Hope. In compliance with G-3.0109 of the Book of Order, this commission shall be granted authority to examine and vote on inquirers under care on behalf of the Presbytery for advancement to the candidacy phase. If the examination is sustained, the time for their year-long candidacy would begin on the date of the Commission’s affirmative vote. Candidates shall be received and welcomed on the floor of Presbytery as is customary and ideally at its next meeting.”

That the presbytery approve the job description for the presbytery’s Stated Clerk position (see attachment #2, page 39).

Job Description

Stated Clerk, Presbytery of New Hope

Purpose:

The Stated Clerk is the ecclesiastical officer of the Presbytery under the provisions of the Book of Order; serving as parliamentarian of presbytery, the interpreter of the Constitution of the Presbyterian Church (USA) and the official correspondent of the presbytery.

Accountability:

The Stated Clerk shall be accountable to the Presbytery for ecclesiastical, procedural and polity matters. For the purpose of performance review and personnel issues, the Stated Clerk shall be accountable to the Personnel Committee of Presbytery. For matters pertaining to the day to day operations that impact Presbytery staff or overall Presbytery operations, the Stated Clerk shall work collegially with the Executive Presbyter.

Duties and Responsibilities:

The Stated Clerk is responsible for: recording and expediting the transactions of the governing body; keeping its rolls of membership and attendance; and preserving its records carefully, furnishing extracts from them as required by another governing body. Ecclesiastical communications addressed or referred to the Presbytery are the responsibility of the Stated Clerk who responds to the correspondence as required, or as directed by Presbytery.

The duties of the Office are prescribed in the Form of Government (G-3.0104), the Book of Discipline (D-11.0601, 11.0701, 11.0801), and the Manual of Administrative Operations of the Presbytery.

The Stated Clerk interprets the Constitution and the actions of the Presbytery when requested. The Stated Clerk is mutually responsible with the Executive Presbyter for interpreting the presbytery's Manual of Administrative Operations.

The Stated Clerk advises presbytery members, commissioners, churches, clerks of Session, ruling elders, committees, commissions, and teams, on procedure and ecclesiastical law.

The Stated Clerk has responsibility for working with the Coordinating Body to locate church sites for presbytery meetings and serving as liaison between the presbytery and the churches hosting the meetings.

Annually, the Stated Clerk brings to the attention of the Presbytery any imbalance between the number of minister members and ruling elder commissioners.

The Stated Clerk shall submit required reports to the Synod of the Mid Atlantic and the General Assembly, including Minutes of the presbytery to the synod for review. The Clerk shall report the action recommended to synod from the presbytery at its first regular meeting thereafter.

The Stated Clerk attends the annual Mid-Council Leaders Conference of the Office of General Assembly and the biennial General Assembly meeting (as requested) in order to:

- Exchange information with the Stated Clerks of other presbyteries and foster career development;
- Be available to give information, background and intent on any overtures, memorials or other papers the presbytery has submitted;
- Monitor the proceedings, noting and communicating the matters that may affect the presbytery.
- Provide orientation for and support the presbytery's commissioners and YAADs to the General Assembly.

Relationships:

The Stated Clerk is the ecclesiastical officer of the presbytery and functions in this capacity as defined by the Constitution, the Administrative Manual of presbytery, and this job description. The Stated Clerk reports to the presbytery.

The Stated Clerk serves as an ex-officio (without vote) member of the presbytery Coordinating Body, taking the Minutes and communicating its actions as directed.

Based upon information and time requests from committee chairpersons and other Presbytery entities, the Stated Clerk shall prepare a proposed docket for stated and special meetings of presbytery in collaboration with the Executive Presbyter and presbytery staff and committee and commission liaisons.

When required, the Stated Clerk advises the presbytery's Permanent Judicial Commission and Investigating Committees and expedites their work. Upon receipt of the certified copies of the final decision in a case from the Clerk of the Permanent Judicial Commission, the Stated Clerk shall report the decision to the presbytery if it is in session at the time; if not in session, at its first regular meeting thereafter.

The Stated Clerk oversees the annual review of Session records (G-3.0108a);

The Stated Clerk provides orientation for Administrative Commissions of the presbytery, as needed;

The Stated Clerk serves the Coordinating Body and advises the Bills and Overtures Committee of the presbytery;

The Stated Clerk attends meetings of, and serves as resource to, the Commission on Ministry in order to provide information, guidance and counsel on the Form of Government and interpreting church polity on matters pertaining to the commission, which may include alerting the commission to the traditions and history of the presbytery;

The Stated Clerk shall serve as a resource for the Committee on Representation and Nominations;

Further Assignments of the Stated Clerk are:

- Processing calls, covenants, dissolutions, dismissals, and transfers in conjunction with presbytery staff;
- Processing matters relating to judicial process and governing body correspondence, as directed;
- Maintaining open communication with the Moderator, and Vice Moderator of the Presbytery, the Coordinating Body, Executive Presbyter and presbytery staff.
- Coordinating as necessary with the Executive Presbyter on presbytery work.

Terms:

The Stated Clerk is elected by the presbytery for a term of five years and is eligible to re- election for an indefinite number of terms.

Election:

The Stated Clerk is elected by the Presbytery by ballot for a five-year term upon the nomination by the Personnel Committee and shall be eligible for an indefinite number of terms subject to the provisions of the Book of Order. The date of election and start of term of service shall be recommended to the presbytery by the Personnel Committee.

Status:

The Stated Clerk position is an exempt, part-time position ordinarily requiring an average of 25 hours per week. Attendance at meetings of assigned entities, the Coordinating Body and presbytery is expected. It is understood that more than 25 hours may be required to complete the necessary work during some weeks, but those additional hours should be recorded by the Stated Clerk and may be used as compensatory time for the weeks when less than 25 hours are required.

Additional hours may be authorized by the Personnel Committee in the case of extraordinary additional work or special projects.

Evaluation:

The work of the Stated Clerk is reviewed at least annually by the Personnel Committee.

Salary:

Salary: \$36,000

SECA: Yes

Reimbursable Expenses: \$1,440

Continuing Education: \$1,400

Family Dental: Yes

Pension: \$16,100

To Apply:

Please address all inquiries or submit your resume in confidence to Katie Crowe, search committee chair at kcrowe@trinityave.org.

A Service of Commission for Commissioners Attending the 226th General Assembly of the Presbyterian Church USA

Teaching Elders

Rev. Thomas Priest – West New Bern
Rev. Joe Sandoval – Roanoke Rapids, First
Rev. Carol Gregg - Retired

Ruling Elders

Wetonah Parker – Davie Street
Clifford Thomas – St. Paul
Jerry Slaymaker – Cary
Alec Peters – Alternate – West Raleigh

Young Adult Advisory Delegate – Mary Mabry

SENTENCES OF SCRIPTURE

Moderator: As many of you as were baptized into Christ *Gal 3:27-28*
Have clothed yourselves with Christ.

All: **There is one body and one Spirit,
just as we were called to the one hope of our calling,
one Lord, one faith, one baptism,
one God and Father of all,
who is above all and through all and in all.** *Ephesians 4:4-6*

Moderator: We are called by God
to be the church of Jesus Christ,
a sign in the world today
of what God intends for all humankind.

The great ends of the church are
the proclamation of the gospel
for the salvation of humankind;
the shelter, nurture, and spiritual fellowship
of the children of God;
the maintenance of divine worship;
the preservation of the truth;
the promotion of social righteousness;
and the exhibition of the Kingdom of Heaven
to the world.

The call of Christ
is to willing, dedicated discipleship.
Our discipleship is a manifestation
of the new life we enter through baptism.
Discipleship is both a gift and a commitment,
an offering and a responsibility.

Moderator: Thomas, Toni, Clifford, Joe, Carol, Jerry, Alec,
the grace bestowed on you in baptism
is sufficient for your calling
because it is God's grace.
By God's grace we are saved,
and enabled to grow in the faith
and to commit our lives in ways that serve Christ.
God has called you to serve as Commissioners to the 226th General Assembly.

Please respond to these questions.

Who is your Lord and Savior?

Jesus Christ is my Lord and Savior.

Will you be Christ's faithful disciple,
obeying his Word and showing his love?

I will, with God's help.

Do you welcome the responsibility of this call
because you are determined to follow the Lord Jesus,
to love neighbors,
and to work for the reconciling of the world?

I do.

Will you serve with
energy, intelligence, imagination, and love,
relying on God's mercy
and rejoicing in the power of the Holy Spirit?

I will, with God's help.

Moderator: Do we, members of New Hope Presbytery,
accept these Commissioners
chosen by God through the voice of the church,
to guide us in the way of Jesus Christ?

We do.

Do we promise to pray for them as they seek to fulfill their responsibilities in this ministry?

We do.

Moderator: COMMISSIONING PRAYER

Faithful God,
in baptism you claimed us;
and by your Holy Spirit you are working in our lives,
empowering us to live a life worthy of our calling.
We thank you for leading them to this time and place.
Establish *them* in your truth,
and guide *them* by your Holy Spirit,
that in your service *they* may grow
in faith, hope and love,
and be faithful disciples of Jesus Christ,
to whom, with you and the Holy Spirit
be honor and glory, now and forever.

CHARGE

You are now commissioned
to service as Commissioners to the 226th General Assembly of the Presbyterian Church USA.
Whatever you do, in word or deed, *Col.3:17*
do everything in the name of the Lord Jesus,
giving thanks to God through him.

BLESSING

May the God of Peace make you holy in every way, and keep your whole being,
spirit, soul, and body, free from every fault at the coming of our Lord Jesus Christ.

All: Alleluia! Amen.

| THE PRESBYTERY OF NEW HOPE | | | | | | | |
|--|--|---------------------------------------|---------------------------------------|---------------------------------------|---------------------------------------|---|--|
| INCOME AND EXPENSE | | | | | | | |
| BUDGET 2024 | | | | | | | |
| | | | | | 02-08-24 | | |
| | | 2023 CHURCH BENEVOLENCES BUDGET | 2023 RESTRICTED FUNDS BUDGET | 2024 CHURCH BENEVOLENCES BUDGET | 2024 RESTRICTED FUNDS BUDGET | 2024 CHURCH BENEVOLENCES BUDGET - PERCENT CHANGE | 2024 RESTRICTED FUNDS BUDGET - PERCENT CHANGE |
| PRESBYTERY INCOME: | | | | | | | |
| | BENEVOLENCE/MISSION & OTHER REVENUE | 1,191,091 | 221,100 | 1,227,048 | 221,100 | | |
| | GENERAL ASSEMBLY/SYNOD PER CAPITA | 250,212 | - | 248,303 | | | |
| | INVESTMENT INCOME | - | 22,000 | | 22,000 | | |
| | TOTAL BENEVOLENCES & OTHER INCOME | 1,441,303 | 243,100 | 1,475,351 | 243,100 | 2.36% | 0.00% |
| PRESBYTERY EXPENSES: | | | | | | | |
| <u>PRESBYTERY COORDINATION BODY</u> | | | | | | | |
| | SALARIES & BENEFITS | 629,720 | - | 652,984 | | | |
| | TRAVEL/CONFERENCE & AIRFARE | 12,000 | - | 12,000 | | | |
| | PAYROLL PROCESSING | 1,500 | - | 1,500 | | | |
| | FINANCE OFFICE SUPPORT | 3,000 | - | 3,000 | | | |
| | INCURANCE/BONDS | 17,500 | - | 17,500 | | | |
| | AUDIT/FINANCE REVIEW | 19,000 | - | 19,000 | | | |
| | COORDINATING BODY MEETING EXPENSE | 1,000 | - | 1,000 | | | |
| | OFFICE LEASE | 30,000 | - | 30,000 | | | |
| | OFFICE MAINTENANCE | 500 | - | 500 | | | |
| | ONLINE SERVICES/TELEPHONE/INTERNET | 12,000 | - | 13,308 | | | |
| | UTILITIES | 3,500 | - | 3,500 | | | |
| | POSTAGE | 2,500 | - | 2,500 | | | |
| | OFFICE EQUIPMENT/SOFTWARE | 10,000 | - | 5,755 | | | |
| | PRINTING/SUPPLIES | 7,500 | - | 7,500 | | | |
| | WEB SITE DESIGN/MAINTENANCE | 7,200 | - | 4,250 | | | |
| | PRESBYTERY APPOINTED COMMITTEES | 500 | - | 500 | | | |
| | PRESBYTERY MEETING EXPENSE | 1,000 | - | 1,000 | | | |
| | PERSONNEL COMMITTEE | 500 | - | 500 | | | |
| | STRATEGIC PLANNING TEAM | 1,750 | 1,750 | - | - | | |
| | AFFILIATED PARTNERS | 2,500 | 10,000 | 2,500 | 10,000 | | |
| | TOTAL PRESBYTERY COORDINATING BODY | 763,170 | 11,750 | 778,797 | 10,000 | 2.05% | -14.89% |
| <u>COMMISSION ON MINISTRY</u> | | | | | | | |
| | CALLS & VACANCIES | 1,000 | - | 1,000 | | | |
| | CONFLICT RESOLUTION | 500 | - | 500 | | | |
| | COUNSELING/COACHING/SHARED GRANTS | 3,000 | - | 3,000 | | | |
| | EXAMINATION EXPENSES | 500 | - | 500 | | | |
| | COMMISSIONED RULING ELDERS | 500 | - | 500 | | | |
| | HEALTHY BOUNDARIES TRAINING | 1,200 | - | 2,400 | | | |
| | COMMITTEE EXPENSES | 4,000 | - | 4,000 | | | |
| | TOTAL COMMISSION ON MINISTRY | 10,700 | - | 11,900 | - | 11.21% | 0.00% |
| <u>PREPARATION FOR MINISTRY</u> | | | | | | | |
| | CANDIDATES & INQUIRIES | 4,000 | 54,000 | 4,000 | 55,500 | | |
| | ANNUAL CONSULTATION | 800 | - | 1,000 | - | | |
| | COMMITTEE EXPENSE | 2,819 | - | 2,258 | - | | |
| | TOTAL PREPARATION FOR MINISTRY | 7,619 | 54,000 | 7,258 | 55,500 | -4.74% | 2.78% |
| <u>OTHER MINISTRIES OF PRESBYTERY</u> | | | | | | | |
| | CONSOLIDATED COMMITTEE EXPENSES | 750 | 22,000 | 750 | 22,000 | | |
| | PASTOR/EDUCATOR ORIENTATON | 100 | - | 100 | - | | |
| | PROFESSIONAL DEVELOPMNET/SHARED GRANT | 1,000 | - | 1,000 | - | | |
| | BLACK CAUCUS | 1,000 | - | 1,000 | - | | |
| | OLDER ADULT MINISTRY TEAM | 2,500 | - | 2,500 | - | | |

| THE PRESBYTERY OF NEW HOPE | | | | | | | |
|---|--|---------------------------------------|---------------------------------------|---------------------------------------|---------------------------------------|---|--|
| INCOME AND EXPENSE | | | | | | | |
| BUDGET 2024 | | | | | | | |
| | | | | | 02-08-24 | | |
| | | 2023 CHURCH BENEVOLENCES BUDGET | 2023 RESTRICTED FUNDS BUDGET | 2024 CHURCH BENEVOLENCES BUDGET | 2024 RESTRICTED FUNDS BUDGET | 2024 CHURCH BENEVOLENCES BUDGET - PERCENT CHANGE | 2024 RESTRICTED FUNDS BUDGET - PERCENT CHANGE |
| ConnectED | | 2,000 | - | 2,000 | - | | |
| SESSIONAL RECORDS | | 100 | - | 100 | - | | |
| RACIAL EQUITY TEAM | | 1,000 | - | 1,000 | - | | |
| PEACEMAKING TEAM | | | | 1,000 | | | |
| YOUTH COUNCIL | | 10,000 | - | 10,000 | - | | |
| TOTAL OTHER MINISTRIES OF PRESBYTERY | | 18,450 | 22,000 | 19,450 | 22,000 | 5.42% | 0.00% |
| <u>OUTDOOR MINISTRIES</u> | | | | | | | |
| CAMP ALBEMARLE | | 60,389 | - | 66,050 | - | | |
| TOTAL OUTDOOR MINISTRIES | | 60,389 | - | 66,050 | - | 9.37% | 0.00% |
| <u>LIFE TOGETHER MINISTRIES</u> | | | | | | | |
| <u>PASSION DRIVEN MINISTRIES</u> | | | | | | | |
| ALLOCATED | | 35,000 | - | | | | |
| TOTAL PASSION DRIVEN MINISTRIES | | 35,000 | - | 35,000 | - | 0.00% | 0.00% |
| <u>CAMPUS MINISTRIES</u> | | | | | | | |
| DUKE CAMPUS MINISTRIES | | 61,094 | - | 61,094 | | | |
| UKIRK OF EAST CAROLINA MINISTRIES | | 31,468 | - | 31,468 | | | |
| NCCU CAMPUS MINITRIES | | 60,094 | - | 60,094 | | | |
| PCM RALEIGH | | 60,094 | - | 60,094 | | | |
| UNC CAMPUS MINISTRIES | | 16,250 | - | 16,250 | | | |
| UNBUDGETED/COMMITTEE EXPENSE | | - | - | 11,000 | | | |
| TOTAL CAMPUS MINISTRIES | | 229,000 | - | 240,000 | - | 4.80% | 0.00% |
| <u>CHURCH DEVELOPMENT & EVANGELISM</u> | | | | | | | |
| <u>CHURCH DEVELOPMENT</u> | | | | | | | |
| NEW WORSHIP COMMUNITIES | | 30,000 | 142,100 | 30,000 | 142,100 | | |
| CHURCH DEVELOPMENT GRANTS | | - | 10,000 | - | 10,000 | | |
| SMALL CHURCH MINISTRY | | 2,000 | - | 2,000 | - | | |
| CONGREGATIONAL DEVELOPMENT TRAINING | | 2,500 | 5,000 | 2,500 | 5,000 | | |
| COMMITTEE EXPENSE | | 1,500 | - | 1,500 | - | | |
| TOTAL CHURCH DEVELOPMENT | | 36,000 | 157,100 | 36,000 | 157,100 | 0.00% | 0.00% |
| <u>EVANGELISM</u> | | | | | | | |
| TRAINING | | 2,500 | - | 2,500 | | | |
| TOTAL EVANGELISM | | 2,500 | - | 2,500 | - | 0.00% | 0.00% |
| <u>PRISON CHAPLAINCY PROGRAM</u> | | | | | | | |
| INTERFAITH PRISON MINISTRY | | 12,000 | - | 12,000 | | | |
| TOTAL PRISON CHAPLAINCY PROGRAM | | 12,000 | - | 12,000 | - | 0.00% | 0.00% |
| <u>GENERAL ASSEMBLY</u> | | | | | | | |
| PER CAPITA ASSESSMENT | | 219,642 | - | 219,642 | | | |
| TOTAL GENERAL ASSEMBLY | | 219,642 | - | 219,642 | - | 0.00% | 0.00% |
| <u>OTHER MISSIONS</u> | | | | | | | |
| SYNOD PER CAPITA | | 28,128 | - | 28,128 | | | |
| TOTAL OTHER MISSIONS | | 28,128 | - | 28,128 | - | 0.00% | 0.00% |
| TOTAL PRESBYTERY EXPENSE | | 1,422,598 | 244,850 | 1,456,725 | 244,600 | 2.40% | -0.10% |
| NET PREBYTERY REVENUES & EXPENSES | | 18705 | -1750 | 18,626 | -1500 | | |

**THE PRESBYTERY OF NEW HOPE
CAMP ALBEMARLE CALCULATION
BUDGET 2023**

| | |
|-----------------------------------|----------------------|
| TOTAL EXPENDITURES | 1,435,192 |
| CAMP ALBEMARLE ALLOCATION | (60,389) |
| PER CAPITA ALLOCATION | (247,770) |
| CAMPUS MINISTRIES | <u>(229,000)</u> |
| NET EXPENDITURES | <u>898,033</u> |
| CAMP ALBEMARLE ALLOCATION (7.35%) | <u><u>66,050</u></u> |

REPORT OF COMMITTEE ON PREPARATION FOR MINISTRY
Rev. Meg Peery McLaughlin and Rev. Brandon Melton
Co-Moderators

1) The committee took the following actions:

Received as inquirer

Joye Douthart (Westminster, Durham)

Recommends that the following inquirers be received as candidates

Jooyoung Hong (Duraleigh)

Certified as ready to receive a call pending examination for ordination

Andrew Amodei (White Memorial, Raleigh)



랄리한인장로교회

Duraleigh Presbyterian Church

5408 Duraleigh Rd. Raleigh, NC 27612 www.rkpc.org

Office (919) 787-4673, Fax (919) 787-0358 info@duraleigh.org

New Hope Presbytery
2022 McDonald Ln
Raleigh NC 27608

November 25, 2023

Dear Members of New Hope Presbytery,

The session of Duraleigh Presbyterian Church unanimously voted on October 1st 2023 to endorse Mr. Jooyoung Hong's application to be enrolled as a candidate. The session is excited to support Mr. Hong's desire to be ordained as a minister of word and sacrament.

I have known Mr. Hong since August 2022. Mr. Hong and his family transferred their membership from Nashville Korean Presbyterian Church. They have been active with every aspect of our community from the first day. The whole family has been as a blessing to the church.

When the youth pastor has to step down unexpectedly, Mr. Hong provides an effective and decisive leadership and has been actively engaging with the youth since then. Mr. Hong is a great encourager and teacher at the same time. Under his dynamic leadership, the youth group now displays a clear sign of spiritual unity.

The session together with the whole congregation is excited that Mr. Hong is now taking a new step to be ordained as a minister of word and sacrament. We pray that our risen Lord, Jesus Christ will be with Mr. Hong as he prepares each day to receive His call.

Sincerely,

Rev. Sanghyun James Lee
The Session Moderator

Jungyul Kim
Clerk

A SERVICE OF RECEPTION FOR

Jooyoung Hong

*As a Candidate for Teaching Elder
Under Care of the Presbytery of New Hope*

THE PRESENTATION OF THE APPLICANT

Rev. Brandon Melton

Jooyoung Hong

THE EXAMINATION OF THE APPLICANT

Moderator Anna Pinckney Straight

(3 minutes)

The applicant shall present his experience of Christian faith, forms of Christian service undertaken, and motives for seeking the ministry.

VOTE ON RECOMMENDATION OF COMMITTEE ON PREPARATION FOR MINISTRY

Rev. Brandon Melton

THE CANDIDACY QUESTIONS

Moderator Anna Pinckney Straight

- (1) Do you believe yourself to be called by God as teaching elder?
- (2) Do you promise in reliance upon the grace of God to maintain a Christian character and conduct, and to be diligent and faithful in making full preparation for this ministry?
- (3) Do you accept the proper supervision of the presbytery in matters that concern your preparation for this ministry?
- (4) Do you desire now to be received by this presbytery as a candidate for teaching elder in the Presbyterian Church (U.S.A.)?

THE DECLARATION OF CANDIDACY

Moderator Anna Pinckney Straight

THE CHARGE TO THE APPLICANTS

Rev. Brandon Melton

I therefore, the prisoner in the Lord, beg you to lead a life worthy of the calling to which you have been called, ²with all humility and gentleness, with patience, bearing with one another in love, ³making every effort to maintain the unity of the Spirit in the bond of peace. ⁴There is one body and one Spirit, just as you were called to the one hope of your calling, ⁵one Lord, one faith, one baptism, ⁶one God and Father of all, who is above all and through all and in all. Ephesians 4.1-6

THE BLESSING OF THE APPLICANT

Rev. Brandon Melton

God of prophets and apostles,
you have chosen leaders to train your people in the way of Jesus Christ.
We thank you that in our day you are still claiming men and women
for special work in the church.
As Jooyoung has dedicated himself to you, let us pledge ourselves to him,
so that, surrounded by affection and hope,
he may grow in wisdom, mature in love,
and become a faithful worker.
We ask this in the name of Jesus Christ our Lord. Amen.

**REPORT OF COMMISSION ON MINISTRY
AND
EXAMINATIONS AND TRANSFERS SUB-COMMISSION**
Rev. Jerry Slaymaker, Coordinating Co-Moderator (Commission on Ministry)
Rev. Thomas Priest, COM East Co-Moderator
Elder John Winings, COM West Co-Moderator
Rev. Rebecca Gillespie, Moderator (Examinations and Transfers)

I. INFORMATION

1. Members of the commission to ordain Paul Burgess at Cary Presbyterian Church on January 20, 2024. Teaching elders: Rev. Bruce Grady, Rev. Paul Lang, Rev. Berry French, Rev. Esther Hethcox. Ruling Elders: Toni Parker, Scott Singleton, Lynn Turner. Guests of the commission: Brennan Breed, Izar Martinez, Mary Burgess, Rachel Ward, Audra Nelson, Stephen McDonald.
2. Members of the commission to install Rev. Patrick Ryan at First Presbyterian Church, New Bern on January 14, 2024. Teaching elders: Rev. Anna Pinckney Straight, Rev. Robert Johnson, Rev. John Robinson, Ruling elders: Margaret Priest, Rad Moeller, Pat Dixon. Guests of the commission: Rev. John McKinnon.
3. Members of the commission to install Rev. Anne Galliher at White Memorial Presbyterian Church, Raleigh on February 4, 2024. Teaching elders: Rev. Katie Cashwell, Rev. Christopher Edmonston, Rev. Ashley-Anne Masters, Ruling elders: Toni Parker, Steve Asher.

II. THE COMMISSION ON MINISTRY AND THE EXAMINATIONS AND TRANSFERS SUB-COMMISSION APPROVED THE FOLLOWING ON BEHALF OF PRESBYTERY

A. Calls

1. Rev. Howard Dudley to serve as pastor/head of staff at Kirk of Kildaire Presbyterian Church, effective January 2, 2024. Terms: annual cash salary \$60,000.00; housing allowance \$60,000.00; social security offset \$9,180.00; reimbursable expenses \$7,500.00; Board of Pensions dues \$46,800.00; moving expenses \$7,500.00. Total compensation package \$190,980.00, 4 weeks of vacation, 2 weeks of continuing education, sabbatical leave of 3 months after 3 years.
2. Rev. John Fawcett to serve as solo pastor at First Presbyterian Church, Smithfield, effective December 3, 2023. Terms: annual cash salary \$28,000.00; housing allowance \$40,000.00; social security offset \$5,202.00; reimbursable expenses \$5,000.00; Board of Pensions dues \$26,520.00. Total compensation package \$104,722.00, 4 weeks of vacation, 2 weeks of continuing education, sabbatical leave of 3 months after 5 years.
3. Rev. Nick Demuynck to serve as senior pastor and head of staff at First Presbyterian Church, Wilson, effective February 7, 2024. Terms: annual cash salary \$65,000.00; housing allowance \$30,000.00; social security offset \$7,267.50; reimbursable expenses \$9,000.00; Board of Pensions dues \$43,750.00. Total compensation package \$155,017.50, moving expenses \$7,500.00; 4 weeks of vacation, 2 weeks of continuing education, sabbatical leave of 3 months after 5 years.

B. Temporary Agreements

1. Rev. Rebekah Maul (HR) to serve as interim pastor at Howard Memorial Presbyterian Church, effective November 27, 2023 through November 26, 2024. Terms: annual cash salary \$53,460.00; housing allowance \$27,540.00; social security offset \$6,197.00; reimbursable expenses \$5,000.00; Board of Pensions dues \$9,720.00; moving expenses \$3,000.00. Total compensation package \$104,917.00, 4 weeks of vacation, 2 weeks of continuing education.
2. Rev. Suk Won Han (HR) to labor within bounds to serve as interim pastor at Greenville Korean Presbyterian Church, effective February 1, 2024 through January 31, 2025. Terms: annual cash salary \$13,200.00; housing allowance \$14,400.00; utilities allowance \$2,400.00; 2 weeks of study leave \$1,000.00; moving expenses \$1,000.00. Total compensation package \$32,000.00.
3. Renewal of interim pastor agreement between Rev. Debbie Osterhoudt (HR) and Oakland Presbyterian Church, effective October 1, 2023 through March 31, 2024. Terms: annual cash salary \$30,000.00; housing allowance \$30,000.00; social security offset \$4,590.00; reimbursable expenses \$3,000.00; Board of Pensions dues \$7,200.00. Total compensation package \$74,790.00.
4. Renewal of interim pastor agreement between Rev. Marguerite Moore Sirrine and Wake Forest Presbyterian Church, effective January 1 through June 30, 2024. Terms: annual cash salary \$40,000.00; housing allowance \$40,000.00; unvouchered allowances \$24,000.00 (\$2,000.00 per month); social security offset \$6,120.00; reimbursable expenses \$4,500.00; Board of Pensions dues \$29,600.00. Total compensation package \$144,220.00.
5. Renewal of stated supply agreement between Rev. Hyeok-Jin Choi and Goldsboro Korean Presbyterian Church, effective November 1, 2023 through October 31, 2024. Terms: annual cash salary \$16,800.00; housing allowance \$14,400.00; medical supplement \$500.00; social security offset (greater than 7.65%) \$2,700.00; bonuses/unvouchered allowances/gifts \$200.00; social security offset (7.65% or less) \$2,594.00; reimbursable expenses \$3,000.00. Total compensation package \$40,194.00.
6. Renewal of stated supply agreement between Rev. Hadley Kifner (LWB) and University Presbyterian Church, effective January 1, 2023 through December 31, 2023. Terms: annual cash salary \$40,190.00; housing allowance \$35,000.00; social security offset \$6,229.00; reimbursable expenses \$3,900.00; Board of Pensions dues \$29,291.00. Total compensation package \$114,610.00, 4 weeks of vacation, 2 weeks of continuing education.
7. Renewal of stated supply agreement between Rev. Laura Brekke Wagoner and Eno and Fairfield Presbyterian churches, effective January 1 through December 31, 2024. Terms: annual cash salary \$18,087.00; housing allowance \$39,600.00; social security offset \$4,413.06; reimbursable expenses \$3,090.00; Board of Pensions dues \$5,768.70.00. Total compensation package \$70,958.76.
8. Renewal of stated supply agreement between Rev. Cam Coburn (LWB) and Macclesfield Presbyterian Church, effective October 1, 2023 through September 30, 2024. Terms: annual housing allowance \$13,800.00.
9. Renewal of stated supply agreement between Rev. Bob Bardin (HR) and Mount Olive Presbyterian Church, effective November 21, 2023 through November 20, 2024. Terms: annual cash salary \$24,000.00; social security offset \$1,836.00; reimbursable expenses \$3,000.00. Total compensation package \$28,836.00.
10. Renewal of stated supply agreement between Rev. Doug Slater and Mt. Pleasant Presbyterian Church, effective December 1, 2023 through November 30, 2024. Terms: housing allowance \$2,700.00.

11. Renewal of stated supply agreement between Rev. John Robinson (HR) and Neuse Forest Presbyterian Church, effective January 1 through December 31, 2024. Terms: annual cash salary \$13,494.00; housing allowance \$8,706.00; social security offset \$1,698.30. Total compensation package \$23,898.30.
 12. Renewal of stated supply agreement between Rev. Don Morris (LWB) and Cann Memorial Presbyterian Church, effective January 1 through June 30, 2024. Terms: annual cash salary \$29,830.00; social security offset \$2,282.00; reimbursable expenses \$1,000.00. Total compensation package \$33,112.00.
 13. Renewal of stated supply agreement between Rev. Michelle Lewis (LWB) and Roanoke Island Presbyterian Church, effective January 1 through December 31, 2024. Terms: annual cash salary \$31,500.00; housing allowance \$2,400.00; social security offset \$2,593.35, reimbursable expenses \$1,200.00. Total compensation package \$40,093.35.
 14. Renewal of stated supply agreement between Rev. Andrea Rock and Westminster Presbyterian Church, Raleigh, effective January 1 through December 31, 2024. Terms: annual cash salary \$20,676.00; housing allowance \$13,308.00; social security offset \$2,599.76; reimbursable expenses \$1,516.24. Total compensation package \$38,100.00.
 15. Renewal of stated supply agreement between Rev. Hadley Kifner (LWB) and University Presbyterian Church, effective January 1 through December 31, 2024. Terms: annual cash salary \$40,314.00; housing allowance \$36,050.00; social security offset \$6,326.00; reimbursable expenses \$3,400.00; Board of Pensions dues \$29,783.00. Total compensation package \$115,873.00, 4 weeks of vacation, 2 weeks of continuing education.
- C. **Commissioned Ruling Elders**
1. John Winings to serve as commissioned ruling elder at First Presbyterian Church, Rocky Mount, effective January 15 through December 31, 2024. Terms: annual cash salary \$97,500.00; reimbursable expenses \$2,500.00; employer share of FICA/Medicare \$7,459.00. Total compensation package \$107,459.00, 4 weeks of vacation, 2 weeks of continuing education.
- D. **Validated Ministries**
1. Remona Dowell to serve as associate pastor for children and youth, Refuge Home Church (pending examination for ordination).
 2. Heidi Biermann to serve as associate pastor for community teaching, First Presbyterian Church, Durham (pending examination for ordination).
- E. **Labor Outside Bounds**
1. Rev. Candice White (HR) for United Church of Christ.
- F. **Dissolutions**
1. Rev. John Fawcett and Wake Forest Presbyterian Church, effective November 5, 2023.
- G. **Dismissals**
1. Rev. Matt Baker to National Capital Presbytery, effective December 7, 2023.
 2. Rev. Mark Hutton to ECO Presbytery of South Carolina (Covenant Order of Evangelical Presbyterians), effective December 7, 2023.
 3. Rev. Delton Farmer to Presbytery of Charlotte, effective December 7, 2023.

H. **Retirement**

1. Rev. Carol Gregg, effective December 31, 2023.
2. Rev. Jacalyn Thomas, effective January 16, 2024.

I. **Nominating Committees**

1. Oakland Presbyterian Church: mission study and pastor nominating committee.
2. First Presbyterian Church, Raleigh: mission study and pastor nominating committee.

J. **Sabbatical Proposals**

Rev. Jonathan Sherrod and Kirk of Holly Springs Presbytery Church.

III. **TO BE APPROVED**

The Commission on Ministry and the Examinations and Transfers Sub-Commission recommend the following:

A. **Commissioned Ruling Elders**

1. Pending successful examination, that Jack Donovan serve as commissioned ruling elder at Bethlehem Presbyterian Church, Mebane, effective February 25, 2024 through February 24, 2025. Total compensation package: \$1,800.00 per month, 4 weeks of vacation, 2 weeks of continuing education. (E&T 1.9.24)

B. **Ordinands**

1. Pending successful examination and signing of the Ministerial Book of Obligations, that the request for Remona (Mona) Dowell to be ordained to serve as associate pastor for children and youth at Refuge Home Church, be approved.
- 2) Pending successful examination and signing of the Ministerial Book of Obligations, that the request for Heidi Biermann to be ordained to serve as associate pastor for community teaching at First Presbyterian Church, Durham, be approved.

IV. **TRANSFERS (To Be Welcomed)**

Rev. Nick Demuynck (Trinity Presbytery), effective February 7, 2024.

Rev. Howard Dudley (Presbytery of Coastal Carolina), effective January 2, 2024.

Rev. James (Jim) Rand, HR (Presbytery of Milwaukee), effective December 12, 2023.

Commission on Ministry & Sub-Commission on Examinations and Transfers

Our Core Values

We are committed to a deepening devotion to Jesus Christ, living in response to the good news of the gospel.

We are committed to fostering relationships among individuals and congregations in the presbytery.

We are committed to a posture of service and worship as we are shaped and formed by the reality of God's kingdom.

We are committed to engaging and supporting the work of that kingdom as it is embodied in local congregations, communities, and ministries.

We are committed to demonstrating a Reformed witness to the Triune God in our governance and our mission (connectional, confessional, evangelical and ecumenical).

| | | |
|---|------------------|--|
| Commission on Ministry & Sub-Commission for Examinations and Transfers | Relational | Church Advocates PNC Vacancy Counselors Healthy Boundaries Education Interim Ministers Community MAL and Validated Ministries Community Qualified/Commissioned Ruling Elder Community Conflict Transformation |
| | Transactional | Approves Mission Studies Authorizes Election of PNC/APNC Examines New & Transferring Pastors Approves Terms of Call Approves Installed Pastors Approves Transitional Pastors Approves Stated Supply Pastors Approves Temporary Moderators |
| | Special Projects | Separation Ethics Policy Review Associate Pastor Support Continuing Education Pastor Transition Period |

APPROVAL AUTHORITIES MATRIX

| Ref # | Items | Actions | | | | |
|-------|---|---------------------------|---|--|--|-------------------|
| | Meets | Weekly | Monthly, Thursday before Full COM meeting | Monthly on second Wednesday except Lent & Advent | Monthly during Full COM in East or West Team | Monthly as Needed |
| | COM Tasks/Responsibilities | Co-Moderators | Exec COM | Full COM | COM Advocate | E&T |
| 1 | Administrative Commission Requests | | | Recommends to Coordinating Body | | |
| 2 | Advocates for assigned churches | | | | Contacts churches every 4-6 weeks | |
| 3 | All Actions of E&T | | | Receives | | Reports to COM |
| 4 | Bridge Interim Ministers | Recommends | | Approves | | |
| 5 | Changes to COM Manual | | | Approves | | |
| 6 | Changes to Terms of Call | | | Approves | | |
| 7 | Church Advocates | Assigned by Co-Moderators | | | | |
| 8 | Co-Moderators | | | Elected by | Team Elects | |
| 9 | COM Agenda | Christine Prepares | Approves | Reviews | | |
| 10 | Compatibility of candidate and church | | | | | Conducts |
| 11 | Compatibility of CRE and church | | | | | Conducts |
| 12 | Conflict Resolution Teams | | | Assigns/Oversight | | |
| 13 | Contract between minister (installed) and church (Terms of Call or Stated Supply Agreement) | | | | | Approves |
| 14 | Declaration of Intent (Separation) | | | Reviews/Accepts | Reviews | |
| 15 | Designated Pastor Positions | | | Approves | | |
| 16 | Dissolution of Pastoral Relationship | | | Reviews/Accepts | Reviews | |
| 17 | Election of PNC/APNC | | | Approves | | |
| 18 | Examination of Ruling Elder considering call as Commission Ruling Elder | | | | | Conducts |
| 19 | Examination for ministers and candidates entering Presbytery | | | | | Conducts |
| 20 | Exec COM Agenda | Prepares | Approves | | | |
| 21 | Gracious Separation | | | Receives and Refers | | |
| 22 | Interim Ministers | | | Approves | | |
| 23 | Inviting Clerks of Session to Church Leadership Connection | Invites through CLC | | | | |
| 24 | Long-term visiting moderators of Session | | Approves | | | |
| 25 | Major milestones/issues within assigned church | | | | Reports to East or West Team | |
| 26 | Minister and Session Exit Interviews | | | Reviews/Accepts | Conducts | |
| 27 | Ministers at Large | | | Provides Oversight | | |
| 28 | Ministry Discernment Profile (CLC) | Approves | | | Reviews | |
| 29 | Mission Study | | | Approves | | |

APPROVAL AUTHORITIES MATRIX

| | Items | Actions | | | | |
|-------|---|---------------------------------|---|--|--|-------------------|
| | | Weekly | Monthly, Thursday before Full COM meeting | Monthly on second Wednesday except Lent & Advent | Monthly during Full COM in East or West Team | Monthly as Needed |
| Ref # | COM Tasks/Responsibilities | Co-Moderators | Exec COM | Full COM | COM Advocate | E&T |
| 30 | Ordination/Installation Commission | Recommends to Coordinating Body | | | | |
| 31 | Parish Associates | | | Approves | | |
| 32 | PNC/APNC Orientation | | | Provides | | |
| 33 | PNC/APNC Work | | | Supports | | |
| 34 | Policy for COM | | | Approves | | |
| 35 | Post-Sabbatical Leave Report | | | Reviews | | |
| 36 | Pulpit Supply List Requests | | Approves | | | |
| 37 | Reports from Designated Pastors (Quarterly) | | | Reviews | Requests | |
| 38 | Reports from Interim Ministers (Semi-annual) | | | Reviews | | |
| 39 | Reports from Validated Ministries (Annual) | | | Reviews | | |
| 40 | Request to Labor Outside Bounds of NHP | | | Approves | | |
| 41 | Requests to be on Pulpit Supply from outside denomination | | | | | Approves |
| 42 | Sabbatical Leave Plan | | | Reviews | | |
| 43 | Session Exit Interview | | | Reviews/Accepts | Conducts | |
| 44 | Stated Supply Ministers | | | Approves | | |
| 45 | Teaching Elder Retirement Requests | | Approves | | | |
| 46 | Temporary Pastoral Relationships | | | | Reviews Monthly | |
| 47 | Transition Orientation | Provides to Session and Staff | | | | |
| 48 | Use of abbreviated Mission Study | Approves | | | | |
| 49 | Vacancy Counselors | Assigns | | | | |
| 50 | Validated Ministers | | | Interviews/Approves | | |
| 51 | Validated Ministries | | | Approves | | |
| 52 | Visiting Moderator (TE/RE) of Session/Congregational Meetings | Approves | | | | |

| MINISTERS' ATTENDANCE 2023 | | | | | | |
|----------------------------|--|-----------|-----------|------------|------------------|------------------|
| Name | Status/Date Ordained or Received | 2/25/2023 | 7/25/2023 | 10/28/2023 | Total Present | Total Excused |
| Acolatse, Esther | | | | E | | 1 |
| Acton, Ben | | P | E | E | 1 | 2 |
| Allen, Sydne | | P | P | E | 2 | 1 |
| Allen, Travis | | P | P | E | 2 | 1 |
| Anderson, James Eade | HR | | | | | |
| Arnold, Darrell | | | E | | | 1 |
| Ash, Aleta | HR | | | | | |
| Ashfield, Baron | HR/7.11.23 | | | E | | 1 |
| Ashmore, James | | | | | | |
| Austin, Sophie | | E | E | E | | 3 |
| Baker, Matthew | | E | P | E | 1 | 2 |
| Bancroft, Alan | | | | | | |
| Banner, Mary Holmes | HR | | | | | |
| Bardin, Bob | HR | E | E | P | 1 | 2 |
| Barker, Jonathan | HR | | | | | |
| Barrick, Sheila | HR | | | | | |
| Beason, Thomas | HR | | | | | |
| Beichner, Bob | | E | E | P | 1 | 2 |
| Bell, Goodwyn | | | | | | |
| Benson, Wayne | HR | | | | | |
| Berghaus, Betty | HR | | | P | 1 | |
| Blumhofer, Chris | | | E | | | 1 |
| Bodisco Massink, Willem | HR | P | P | | 2 | |
| Boehne, Elizabeth | | E | E | E | | 3 |
| Bowman, Matt | | E | E | P | 1 | 2 |
| Brand, Richard | HR | | | | | |
| Brawley, Robert | HR | | | | | |
| Brazil, Willie | HR | | | | | |
| Brimer, Allen | | P | | P | 2 | |
| Brizendine, Bob | HR | | | | | |
| Brothers, John | HR | | | | | |
| Brown, James | HR | | | | | |
| Brunk, Kevin | | E | E | | | 2 |
| Cameron, Stuart | HR | P | | P | 2 | |
| Cashwell, Katie | | P | P | P | 3 | |
| Cates, Marla | | | | E | | 1 |
| Chang, Sunny | | | | | | |
| Chappell, William | HR | | | | | |
| Choi, Hyeok-Jin | | E | | P | 1 | 1 |
| Churn, Moffett | HR | | | | | |
| Churn, Ted | HR | | | | | |
| Clark, Andrew | | | | | | |
| Clark, Robert | HR | | P | | 1 | |

| Name | Status/Date Ordained or Received | 2/25/2023 | 7/25/2023 | 10/28/2023 | Total Present | Total Excused |
|--------------------------|--|-----------|-----------|------------|------------------|------------------|
| Cleveland, Heidi | | | E | E | | 2 |
| Colcord, Claire | | E | E | E | | 3 |
| Connette, Betty | HR | | | | | |
| Crow, David | HR | | | | | |
| Crowe, Katie | | P | P | P | 3 | |
| Davis, John | | | | | | |
| Davis, Jordan | | P | E | E | 1 | 2 |
| Deppenbrock, Bonnie | HR | | | | | |
| dePrater, Margaret | HR | | | | | |
| Diekman, Amanda | | | | | | |
| Douglas, Meri-Li | | | | P | 1 | |
| Douglas, Mindy | | P | E | P | 2 | 1 |
| DuCille, Winona | HR | | | | | |
| Dukes, Karen | HR | | | | | |
| Dunderdale, David | | | | E | | 1 |
| Dunham, Bob | HR | | P | | 1 | |
| Dunlap, Susan | | | | | | |
| Easter, Lakesha Bradshaw | | P | | P | 2 | |
| Eddy, Douglas | HR | | | | | |
| Edmonds, Cheryl | HR | | | | | |
| Edmonds, Hart | HR | | | | | |
| Edmonston, Christopher | | P | P | E | 2 | 1 |
| Ellis, Robert | HR | | | | | |
| Evans, Charles | HR | | | | | |
| Evans, Robert | HR | | | | | |
| Farmer, Charles | HR | | | | | |
| Farmer, Delton | | E | P | | 1 | 1 |
| Fawcett, John | | | P | E | 1 | 1 |
| Fenwick, James | | | | | | |
| Ferry, Jim | HR | | | | | |
| Fischer, Alex | | P | P | E | 2 | 1 |
| Fisler, Alice | HR | | | | | |
| Ford, Graham | | E | E | E | | 3 |
| French, Berry | | P | P | | 2 | |
| Fricks, Susan | HR | | | | | |
| Fuentes, David | | E | E | P | 1 | 2 |
| Fulkerson, Mary M. | HR | | | | | |
| Fulton, Gary | HR | | | | | |
| Galliher, Anne | | E | P | | 1 | 1 |
| Gicker-Anderson, Juliann | | E | E | E | | 3 |
| Gillespie, Rebecca | | P | P | P | 3 | |
| Gillette, Jeffrey | | | | | | |
| Golden, Franklin | | P | E | E | 1 | 2 |
| Grady, Bruce | | P | P | P | 3 | |
| Grandstaff, Daniel | HR | | | | | |
| Graves, Spottswood | HR | | | | | |

| Name | Status/Date Ordained or Received | 2/25/2023 | 7/25/2023 | 10/28/2023 | Total Present | Total Excused |
|----------------------|--|-----------|-----------|------------|------------------|------------------|
| Greene, David | HR | | | | | |
| Greenwold, Larry | HR | | | P | 1 | |
| Gregg, Carol | | P | | | 1 | |
| Gregory, Henry | HR | P | P | P | 3 | |
| Griffith, Lloyd | HR | | | | | |
| Grill, Chris | HR | E | E | | | 2 |
| Gunn, Wilson | HR | | P | | 1 | |
| Hale, Elizabeth | HR | | | | | |
| Hall, Deky | | P | E | E | 1 | 2 |
| Harris, Tom | | P | E | P | 2 | 1 |
| Harvard, Joe | HR | | | | | |
| Harvey, Thomas | | | | | | |
| Hausmann, Margot | | | | | | |
| Hausmann, Peter | | | E | E | | 2 |
| Hawkins, Jimmie | | P | E | E | 1 | 2 |
| Hawkins, Vanessa | | P | E | E | 1 | 2 |
| Hawkins, William | HR | | | | | |
| Hayes-Bowman, Amanda | | E | E | | | 2 |
| Hebacker, Lisa | | E | E | P | 1 | 2 |
| Hedgpeth, Ingram | HR | | | | | |
| Hedgpeth, Marilyn | HR | | | | | |
| Hefner, Kerri | | P | P | | 2 | |
| Hein, Marilyn | HR | | | | | |
| Heit, Amy Bowers | | E | E | E | | 3 |
| Henry, Cheryl Barton | | P | P | P | 3 | |
| Herring, Stephen | HR | P | P | | 2 | |
| Hester, Joe | | E | | | | 1 |
| Hethcox, Esther | 4.1.23 | | P | P | 2 | |
| Higgins, Katherine | | | | P | 1 | |
| Hill, Amanda | | P | E | E | 1 | 2 |
| Hines, Amanda | | E | P | P | 2 | 1 |
| Hix, Duane | HR | P | | | 1 | |
| Hodge, Jim | HR | | | | | |
| Hoffman, David | HR | | | | | |
| Holman, Jo Ella | HR | | | | | |
| Huffman, David | HR | | P | | 1 | |
| Hufham, William | HR | | | P | 1 | |
| Hulsey, Jimmy | HR | P | P | E | 2 | 1 |
| Hutton, Mark | | E | E | | | 2 |
| Inskeep, Robert | HR | P | P | | 2 | |
| Jackson, Karen | | | P | P | 2 | |
| Jackson, Rob | | P | P | E | 2 | 1 |
| Jillson, Edward | HR | | | | | |
| Johnson, Ed | | E | P | P | 2 | 1 |
| Johnson, Erik | HR | P | P | | 2 | |
| Johnson, Gloria | HR | | | | | |

| Name | Status/Date Ordained or Received | 2/25/2023 | 7/25/2023 | 10/28/2023 | Total Present | Total Excused |
|-----------------------|--|-----------|-----------|------------|------------------|------------------|
| Johnson, Robert | HR | P | P | P | 3 | |
| Johnston, Monte | | | | | | |
| Johston-Krase, Ben | | | | P | 1 | |
| Joines, Vann | HR | | | | | |
| Juarez, Noe | | P | P | P | 3 | |
| Kane, Ben | | P | P | | 2 | |
| Kelly, Laura | | P | P | E | 2 | 1 |
| Kidd, John | HR | | | | | |
| Kidd, Roberta | HR | | | | | |
| Kincaid, Jacob | HR | | | | | |
| King, Arthur | HR | | | | | |
| King, Melinda Merkley | | E | P | P | 2 | 1 |
| Kirk, Debbie | | E | P | E | 1 | 2 |
| Kirkpatrick, Bettie | HR | | | | | |
| Kisner, Jeff | HR/9.12.23 | | | P | 1 | |
| Koeneke, Alan | | P | P | P | 3 | |
| Kort, Phyllis | HR | | | | | |
| Kuiken, Rebecca | | | | | | |
| Kussmaul, Katherine | | E | P | E | 1 | 2 |
| Lanford, Conway | HR | | | | | |
| Lang, Paul | | P | | P | 2 | |
| Lawrence, Antonio | | P | P | P | 3 | |
| Lee, Gun Ho | | P | P | E | 2 | 1 |
| Lee, Sang-Hyun James | | | E | | | 1 |
| Leshner-Thomas, Mitzi | | | E | E | | 2 |
| Leshner-Thomas, Troy | | P | E | P | 2 | 1 |
| Lester-Bacon, Kathryn | | | E | | | 1 |
| Lewis, Troy | HR | | | | | |
| Liestman, James | HR | | | | | |
| Link, Charles | | P | P | E | 2 | 1 |
| Macon, Alston | HR | | | | | |
| Mansell, Debbie | | P | E | P | 2 | 1 |
| Mansell, Frank | | P | P | P | 3 | |
| Martin, Billy Joe | HR | | | | | |
| Masters, Ashley-Anne | | | | | | |
| Maul, Rebekah | HR | P | | | 1 | |
| Mazzara, Susan | | | E | | | 1 |
| McCartney, Carole | HR | | | | | |
| McCracken, Ronn | HR | | | | | |
| McFayden, Ken | | P | P | P | 3 | |
| McGuire, Elizabeth | | | E | | | 1 |
| McLaughlin, Jarrett | | E | E | P | 1 | 2 |
| McLaughlin, Meg Peery | | P | E | P | 2 | 1 |
| McLeod, Ed | HR | E | E | | | 2 |
| McMenamin, Ronald | HR | | | | | |
| Melton, Brandon | | P | P | E | 2 | 1 |

| Name | Status/Date Ordained or Received | 2/25/2023 | 7/25/2023 | 10/28/2023 | Total Present | Total Excused |
|------------------------|--|-----------|-----------|------------|------------------|------------------|
| Metzger, Esther | | | | | | |
| Mickey, Marie | HR | P | P | | 2 | |
| Migliarese, Sam | HR | | | | | |
| Miltholland, John | HR | | P | E | 1 | 1 |
| Miller, Perry | | | | | | |
| Mills, Alvin | HR | | | | | |
| Moore, Jody | | P | | P | 2 | |
| Moorhead, James | HR | | | | | |
| Myner, Nancy | 11.12.23 | | | | | |
| Myers, John | HR | | | | | |
| Nelson, Patrice | HR | | | | | |
| Nord, Alice | HR | | | | | |
| Nord, Bernard | HR | | | | | |
| Norman, Cate Church | | E | E | | | 2 |
| Nystrom, Richard | HR | | | | | |
| Olson, Frances | HR | | | | | |
| Omokunde, Omotolokun | HR | E | P | P | 2 | 1 |
| Osterhoudt, Debbie | HR | P | | | 1 | |
| Ouellette, Judy | | | | | | |
| Parato, LaVera | | E | P | P | 2 | 1 |
| Park, Changweon | | | | | | |
| Parker, Linda | HR | | | | | |
| Peck, William | HR | | | | | |
| Pidcock, Judy | | E | | | | 1 |
| Pierce, William Eugene | HR | | | | | |
| Pilutti, John | HR | | | | | |
| Pistor, Lori | HR | P | P | | 2 | |
| Poole, Allan | HR | | | | | |
| Pope, Chip | | P | E | | 1 | 1 |
| Priest, Thomas | | P | P | P | 3 | |
| Ramirez-Eve, Julio | | | E | P | 1 | 1 |
| Reyes, Rebecca | HR | | | | | |
| Richards, Grier Booker | | | | | | |
| Rick-Miller, Katherine | | | | E | | 1 |
| Rimmer, Charles | HR | | | | | |
| Robinson, John | HR | | | P | 1 | |
| Rock, Andrea | | P | P | P | 3 | |
| Rodriguez, Jackie | 1.8.23 | E | P | P | 2 | 1 |
| Rodriguez, Zaida | | P | E | P | 2 | 1 |
| Rogers, John | | E | | E | | 2 |
| Rose, Jane | HR | | | | | |
| Ross, Arthur | HR | | | | | |
| Rubish, Kim | 4.16.23 | | E | | | 1 |
| Ruth, Andrew | | | | | | |
| Ryan, Patrick | 8.14.23 | | | P | 1 | |
| Sadler, Bill | HR | | | | | |

| Name | Status/Date Ordained or Received | 2/25/2023 | 7/25/2023 | 10/28/2023 | Total Present | Total Excused |
|---------------------------|--|-----------|-----------|------------|------------------|------------------|
| Sandoval, Joe | | P | | P | 2 | |
| Schafer, MacHenry | | P | E | E | 1 | 2 |
| Schaick, Steve | | P | P | P | 3 | |
| Sebesan, Dennis | HR | | | | | |
| Sexton, Susan | HR | | | | | |
| Sherrod, Jonathan | | P | P | E | 2 | 1 |
| Siker, Jeff | HR | | | | | |
| Siker, Judy | HR | | | | | |
| Sirrine, Marguerite Moore | | | P | P | 2 | |
| Slater, Doug | | E | P | E | 1 | 2 |
| Smerko, Molly | | P | E | P | 2 | 1 |
| Smith, Gerald | HR | | | | | |
| Smith, Janise Matyas | | | E | E | | 2 |
| Smith, Katherine | | E | E | E | | 3 |
| Smith, Preston | HR | | | | | |
| Son, Samuel | | | | | | |
| Speight, John | HR | P | | | 1 | |
| Spransy, George | HR | | | | | |
| Stall, Lynn | HR | | | | | |
| Stalnaker, Clay | HR | | | | | |
| Stayer-Brewington, Alex | | | | | | |
| Steege, Mary | HR | | | | | |
| Stephenson, Haley | 8.19.23 | | | P | 1 | |
| Stokes, Jeanette | HR | | | | | |
| Stone, John "Rocky" | | P | P | P | 3 | |
| Stone, Samuel | HR | | | | | |
| Straight, Anna Pinckney | | P | P | P | 3 | |
| Stratton, Brian | | | | E | | 1 |
| Stubbs, Vincent | HR | | | | | |
| Sturdivant, Robert | HR | | | | | |
| Styers, Barbara | | E | E | P | 1 | 2 |
| Suh, Helder Kinam | | E | E | | | 2 |
| Taylor-Troutman, Ginny | | | | | | |
| Thomas, Jacalyn | | | | | | |
| Thomas, John Maurice | HR | | | | | |
| Tisdale, Nora | HR | | | | | |
| Todd, Mary Harris | | P | P | P | 3 | |
| Trawick, Hannah | | P | E | P | 2 | 1 |
| Troxell, Brad | | | | | | |
| Tuttle, Carrie | | E | E | E | | 3 |
| Tuttle, Chris | | E | | P | 1 | 1 |
| Undercofler, Betsy | | E | E | E | | 3 |
| Vellenga, David | HR | | | | | |
| Verner, David | HR | | | | | |
| Vincent, Clark | HR | | | | | |
| Volkwijn, Kay Robert | HR | | | | | |

| Name | Status/Date Ordained or Received | 2/25/2023 | 7/25/2023 | 10/28/2023 | Total Present | Total Excused |
|---------------------------|--|-----------|-----------|------------|------------------|------------------|
| Wagner, Charles Van | HR | | | | | |
| Wagoner, Laura Brekke | | P | P | E | 2 | 1 |
| Walkup, Robert | HR | | | | | |
| Watkins, Tom | | P | | | 1 | |
| Weicher, John | | P | E | E | 1 | 2 |
| Weicher, Laurie Taylor | | P | E | E | 1 | 2 |
| Weisz, Kirk | | | | | | |
| Wert, Brandon | | | P | | 1 | |
| Westbrook, Fred | HR | | | | | |
| White, Candice | HR | E | | | | 1 |
| White, Paul | HR | | | | | |
| Whitmer, Elizabeth | | P | P | E | 2 | 1 |
| Wicks, Steven | HR | | | | | |
| Wiley, Clyde | HR | | | | | |
| Wilkes, Emily | 8.28.23 | | | P | 1 | |
| Williams, Tyler | | P | P | E | 2 | 1 |
| Williamson, Portia Turner | | E | | | | 1 |
| Wilson, Gerald | HR | | | | | |
| Wilson, Thomas | HR | | | | | |
| Wilson-Stayton, Claude | HR | | | | | |
| Wilson-Stayton, Margaret | HR | | | | | |
| Wintermute, Orval | HR | | | | | |
| Wiseman, David | HR | | | | | |
| Wolf, Sarah | | P | P | E | 2 | 1 |
| Workman, Jim | | E | | | | 1 |
| Workman, Stephanie Arnold | | E | | | | 1 |
| Wyly, David | HR | | | | | |
| Yoon, Seok Hyun | | | | | | |
| Yuckman, Colin | | | | | | |
| Yuckman, Meredith | | | | | | |

PRESBYTERY OF NEW HOPE MEMBERS-AT-LARGE

'The status of member-at-large shall be reviewed annually.' G – 2.0503b

The following members-at-large (MALs) made their annual report for 2023:

William Arnold

James Ashmore

Sophie Austin

Libby Boehne

Sunny Chang

Heidi Cleveland

Meri-Li Douglas

Juliann Gicker-Anderson

Jeff Gillette

Deky Hall

Thomas Harvey

Peter Hausmann

Joseph Hester

Amanda Hill

Susan Mazzara

Elizabeth McGuire

Esther Metzger

LaVera Parato

Judy Pidcock

Janise Matyas Smith

Carrie Tuttle

Seok Hyun Yoon

PRESBYTERY OF NEW HOPE VALIDATED MINISTRIES

The following ministers serving in validated ministries made their annual report for 2023:

Robert Beichner

Chris Blumhofer

Carol Gregg

Amanda Hayes-Bowman

Jimmie R. Hawkins

Katherine Higgins

Amanda Hines

Katherine Lester-Bacon

Debbie Mansell

Kenneth J. McFayden

Zaida Rodriguez

John Rogers

Katherine Smith

Haley Stephenson

Barbara Styers

Betsy Undercofler

Colin Yuckman

**Pastor for Community Teaching
Presbytery of New Hope
Job Description**

General Statement of Duties:

The Pastor for Community Teaching works in the areas of ministry to rural congregations, teaching, pastoral care, and worship. The Pastor will report to the Presbytery of New Hope as a Validated Minister, and the Pastor will have an oversight board consisting of Katie Cashwell, Betty Berghaus, Lydia Menzel, and Mindy Douglas. The Pastor will be housed at First Presbyterian Church in Durham, NC, and will have duties there when not working with rural congregations. The Pastor will actively support the mission and values of the Presbytery of New Hope and FPC-Durham. Duties are supervised by the oversight board and the Head of Staff of FPC-Durham.

Areas of Responsibility and Specific Duties:

1. Ministry to Rural Congregations - the Pastor will:
 - support rural congregations through occasional supply preaching and worship leadership, approximately 6–12 times per year
 - work together with the New Hope Presbytery Pulpit Supply Coordinator and the Pastor's oversight board to schedule preaching dates, prioritizing congregations in the New Hope Presbytery with ongoing pulpit supply needs;
2. Teaching - in conjunction with the Pastor of FPC-Durham, the Pastor will:
 - co-lead Confirmation classes weekly (November - May);
 - plan and teach other faith formation classes for various ages;
 - lead inquirers' classes for new members;
 - attend young adult gatherings and help new young adult visitors become connected with the young adult community;
 - chaperone youth mission trips and retreats.
 - These duties will also extend to rural congregations as needed, either by supporting rural congregations in their own faith formation, or by integrating congregants from rural congregations into the ministries of FPC-Durham.
3. Worship - the Pastor will:
 - participate with other FPC-Durham pastors, the Minister of Music, and the Worship and the Arts Committee in the planning of weekly worship services;
 - participate in worship leadership as needed and requested by the Head of Staff of FPC-Durham;
 - preside at the table for the Lord's Supper;
 - preach approximately 1–2 times a year.
4. Additional duties (as required and in collaboration with others):
 - Lead and support the entire FPC-Durham community;
 - Visit those members of the congregation experiencing significant illness or loss, whether at FPC-Durham or rural congregations;
 - Be an active part of the Presbytery of New Hope

**Pastor for Community Teaching
Presbytery of New Hope
Job Description**

Qualifications:

1. Undergraduate degree from an accredited college or university.
2. A Master of Divinity degree or its equivalent.
3. Ordination in the PC(USA) or covenant partner, or candidacy for ordination.

Miscellaneous:

This is a 10-hour-per-week, unpaid position (though the Pastor would be paid when they preach at FPC-Durham or other congregations).

Statement of Faith

Heidi Biermann

I believe in God—the God whom I first learned about from my parents and from Sunday School, the God whom I see expressed in the words of Scripture and of the confessions of the Reformed tradition, the God whom we are able to know through God’s self-revelation in Christ. God is one but manifested in three persons: Father, Son, and Holy Spirit. This idea of the Trinity explains that God is at work in the world in three ways, while never with division; Father, Son, and Holy Spirit are unified in purpose and action. God has used experiences, Scripture, and people in my life to draw me nearer to God’s self and to help me grow in understanding and expressing what I believe.

I believe God is all-powerful and unchanging in God’s love for us. God created all things, made humankind in God’s image, and made a covenant with humankind. God loves and cares for us, and God continues to be intimately involved in what God has made, upholding creation and using all things for good.

I believe God comes to us where we are. When we as human beings fell short of God’s good vision for us, Jesus Christ came into the world, fully God and fully human, to atone for our sin. Because Christ was crucified and resurrected in the flesh, we are able to walk in a new life, no longer characterized by sin and no longer captive to death. The incarnation—the fact that in Jesus Christ, God became a person and lived a human life—dignifies our mundane human existence and all the joys and burdens that go with it.

I believe God is continually at work in our lives and in our world through the work of the Holy Spirit. I believe the Holy Spirit guided the authors of the Old and New Testament Scriptures, and the Holy Spirit continues to use the Bible to reveal who God is and how people should live in response. The Holy Spirit also works through the Church, the body of Christ composed of believers from around the world and across time, expressed through local congregations. Through the Church, we worship God and offer ourselves to God through prayer and through the sacraments of baptism and the Lord’s Supper—signs and seals of God’s grace that meets us where we are, enables us to respond in faith, and sustains us.

I believe that following Christ impacts every part of life. The new life we have in Christ both gives us hope of eternal life and also impacts how we use our time and resources on earth. As I follow Christ, I aim to reflect the self-giving love of our triune God, demonstrating love for God and love for people in all that I do and seeking to care for God’s creation well. I hope that every aspect of my life is shaped by my love for Jesus Christ and my recognition that nothing is excluded from Christ’s reach. As a follower of Christ, I am called to live, serve, and repent in this imperfect world while looking ahead in hope to the complete redemption that God will ultimately bring.

Biographical Sketch

Heidi Biermann

I am drawn to the intersection of academic teaching and congregational ministry. As a doctoral candidate in New Testament at Duke Divinity School, I spend much of my time teaching divinity students, as well as researching and writing for the sake of the church. My dissertation focuses on age (young, old, and in-between) in Luke's Gospel and the book of Acts, as I argue that these narratives illustrate the age-inclusivity of God's work. Through my writing, I hope to encourage congregations to embrace the gifts and setbacks that come with different stages of life and to foster age-inclusive environments.

During my doctoral studies, I have been an active affiliate member of First Presbyterian Church of Durham. At FPC-Durham, I have volunteered in the youth ministry program (and I am currently co-leading Confirmation), preached and led worship, and taught various adult education classes. I also frequently serve as a pulpit supply preacher for the Presbytery of New Hope, supporting rural congregations. Through my new position, I am eager to continue supporting rural congregations, particularly by being able to preside over the sacraments. Further, I look forward to fostering connections between rural congregations and FPC-Durham.

Statement of Faith

Rev. Nick Demuynck

I believe in God the Father, Mother, and Creator.

God created the world out of nothing and created humankind to live in relationship with it, and it was good.

God looks at everyone as beloved regardless of race, gender, where they come from, or who they love.

While we are broken people, it is through God's unceasing and abundant love that we are redeemed in God's sight.

There is nothing we can do to lose favor in God's eyes, because God's love is unconditional and freely given to us.

God celebrates with us in our joys and picks us up in our sorrows.

I believe in Jesus Christ, our Redeemer, and God's son;
fully human, fully divine.

Jesus lived with us, died for us, and rose again for the sake of our sins so we may be reconciled with God.

I believe that Jesus came to proclaim the good news to the poor,
heal the sick,

eat with the tax collectors,

and forgive the sinner.

Jesus' message is a message for all, both Gentiles and Jews, not just those with power or privilege to hear it.

I believe in the Holy Spirit, Sustainer of life.

The Holy Spirit is the continual gift of God's presence moving through all of us.

The Spirit binds us all together as children of God and creates an authentic community of believers both in the church visible and invisible.

The Spirit gives us a voice when we feel voiceless,

allows us to stand up for justice and mercy when we are afraid,

and reassures us that God is with us when we feel lost.

Through the Spirit moving within us, we know how to live just lives, spreading the Good News of Christ's love to all.

I believe in the authority of Scripture as a lens through which we view the world.

People of faith are called to talk about God and Scripture gives us the ability to do so.

The Holy Spirit was moving through the writers as they were writing the biblical text.

Still, the Bible should be read knowing that it was written by people, with specific contexts, during different time periods.

Scripture gives us the unique and authoritative witness to know and proclaim God's love for us all through its stories and the ministry of Jesus.

I believe that we are called by God to live in community with each other, and that this community is the church.

The church is where we are able to come as we are, broken, flawed, and hurting, and know that we are welcomed and accepted as children of God.

All should be welcome within the church, each of us brings our own unique gifts to continue to build the kingdom of God until Christ comes again.

I believe that the sacraments of Communion and Baptism are God's gifts of grace through Christ Jesus offering his life for us, through the Holy Spirit.

I believe that Christ's presence welcomes us to the heavenly banquet when we come to the table, and that no one should be turned away from this amazing gift of grace.

I believe that there is nothing in life or in death that can separate us from the love of God, the grace of Jesus Christ, and the fellowship of the Holy Spirit that is with us all today and every day.

Biographical Sketch

Rev. Nick Demuynck

Prior to being called to FPC Wilson, I served as the Associate Pastor for Youth and Young Adults at Eastminster Pres. in Columbia, SC. I served that church for a little over 3.5 years. Prior to that I was in seminary at Austin Presbyterian Theological Seminary.

Personally, I grew up in Wake Forest, NC, and went to NC State for undergraduate with a degree in Park, Recreation, and Tourism Management. After undergraduate I served as the Associate for Youth Ministry at White Memorial in Raleigh, NC, where I also had the privilege of serving on the Youth Council for New Hope Presbytery. I also served on APCE committees, led recreation for Theta Conference at Montreat in 2014, and was most recently on the Trinity Presbytery CPM.

I am a husband to Savannah, who is also an ordained PC(USA) pastor, and father to Thatcher. Savannah and I have been married for almost 6 years, and our son is a little over 5 months old. I am an extrovert, enjoy watching sports, and time with friends and family. I am excited to be joining New Hope Presbytery again, and look forward to serving in whatever way I can.

Statement of Faith

Jack Donovan

I believe in God as source of grace and truth and as creator of heaven and earth, I believe it is this God whom Jesus called our Father and whose world, when sought in accord with the way of Christ, ends all anxiety and provides all that our bodies need and all that our souls hope for. I believe it is God who by grace gives us life and restores us when we are weakened by uncovenantal waywardness in ourselves and our world.

I believe in Christ Jesus, fully God, fully human - one with God and one with us. I believe it is Christ who shows us God's truth and way and life, which continually re-open and restore the world with the power of grace. I believe Christ calls us into relationship with himself and therein with God. I believe our developmental needs, materialistic values, and difficulties in life cause us to lose touch with God's grace and truth and to lose track of God's gracious way by which are blessed our souls and our world. I believe Christ calls us - by his being, words, and deeds - to understand and do God's will by loving and caring for God and one another with our whole heart, soul, mind and strength, as God has always loved us.

I believe the way of God's grace and truth is revealed by Jesus in the gospels and that this revelation provides sufficient instruction in faith and spirit for us to continually return to God and care for all. I believe Jesus' revelation is anticipated and supported throughout the scriptures from Genesis on.

I believe in God the Holy Spirit as bringer and renewer of life. I believe that the Spirit proceeds through the eons and generations from the beginning, bearing into our souls the grace by which we are created and grow and by which we come to seek and experience God. I believe the Spirit provides us with the strength of heart, mind, soul, and body to live, to heal, to find God in Christ and cosmos, and to be in communion with Christ in God's world.

I believe the Church is a community for all humankind in all its diversity. I believe the Church is the body of Christ – that is, his instrument of witness to spread his ways of grace for healing souls and glorifying God. I am devoted to the Reformed and reforming Church as a tradition that helps the generations become aware of the Gospel of Jesus and strives to demonstrate how to live together in inspiring covenant and nourishing communion.

In the sacraments I experience the signs of God's grace and truth poured out for us. By Baptism I believe we are shown Christ's universal welcome into the communal life of grace and truth. By Communion I believe we are shown God's provision of grace and truth for all our needs for all our lives.

Biographical Sketch

Jack Donovan

I was raised in Massachusetts in a devout Roman Catholic family. I am married to Alisun Donovan, a retired PCUSA minister (St. Augustine Presbytery, Florida). We share three adult children and six grandkids. My education includes a B.A. in Literature, a Masters in Public Policy, and a Master of Divinity. My service to the Presbyterian Church is as a ruling elder on the session of Westminster Presbyterian Church of Gainesville, Florida, as a member of St. Augustine Presbytery's CRE training team (pastoral care), and as CRE pastor for McIntosh (FL) and Highlands (Gainesville) Presbyterian churches. I have also served as a Peace Corps volunteer (Micronesia Pacific Islands), U.S. Agency for International Development Refugee and Development officer (Vietnam), Boston Community Action Agency staff, U.S. departments (HUD, DOL, HEW) program development consultant, two Florida Unitarian Universalist congregations, chaplain for Haven Hospice of North Central Florida, executive director of the Alachua County Coalition for the Hungry and Homeless, elected Gainesville City Commissioner, and on many public boards (North Central Florida Food Bank, Rosa Parks Celebration Commission, Habitat for Humanity, Gainesville Dismantling Racism Commission, Sierra Club, Alachua County United Nations Association, et al.

Statement of Faith Remona Dowell

I believe God is eternal, abundant, and abiding love and that God gives us access to the gifts, guidance, and endurance we need to love ourselves and others. God created the world and gives abundantly from creation and to creation. Jesus Christ, the incarnation of God, feels the intricacies of our mortality with perfect love. God is not resentful or vengeful but, fully knowing our wounds and the nuance of our struggles and sin offers us grace and forgiveness through divine guidance and friendship. The Holy Spirit of God accompanies us through the exceptional and mundane moments of life offering wisdom and endurance. They are always present with us even when we feel utterly alone.

I believe that all people are made in the image of our creator with no hierarchy of inherent value, dignity, gifts, or abilities. No division perceived through natural or human design should separate us as one people of God, nor *can* it separate anyone from the love of God.

I believe that we all sin and fall short of perfect love. We grapple with hate and corruption in our hearts and minds, teaching our children to live a life of scarcity when God's abundance is ever present. We turn our backs on the kingdom of heaven striving to become first and fearing to become last. We build and participate in hierarchical social and institutional systems that hoard wealth and resources for those at the top and progressively dominate, humiliate, and subjugate those who have inherited or possess less.

I believe in an ever reforming faith, grounded in humility, eager to listen and always ready to grow in understanding and change when repentance is due. Faith seeks an open heart and mind by centering Christ. Inaction born of guilt and combativeness born of defensiveness center and prioritize comfort and ego over love. They resist accountability and reform by actively obscuring the two greatest commandments: love the Lord your God with all your heart, soul, mind, and strength and love your neighbor as yourself.

I believe in salvation. The Good News of the Gospel is that all sin can be and will be overcome. Hatred will be abolished, the weary revived, the imprisoned set free. All violence will be brought to account and true repentance will liberate first the oppressed and then the oppressor. Survival will turn to flourishing, death into life.

Biographical Sketch

Remona Dowell

Mona Dowell began serving at Refuge Home Church in Durham for children and youth ministry in October 2023. Refuge is a building-less congregation that mostly meets in people's homes and at parks with roughly half the congregation being children and youth. Unconventional church is a natural fit providing interesting and creative ways to be church. "Spiritual Resiliency" is the guiding phrase she brings into this new ministry and hopes to foster meaningful multigenerational discipleship and faith formation alongside head pastor Rev. Megan Pardue.

Mona was born and raised in the Philippines as a missionary kid with a "home state" of Ohio. Durham has been home since 2013. With a background in photo and video editing, time as a chaplain resident, teaching English as a TEFL certified teacher for Chinese university students, and a worship leader for 7+ years, she is able to draw from a wealth of varied experiences that inform and shape ministry in unexpected and joyful ways. She is also a singer-songwriter who has written and released secular and sacred music.

She is a graduate of Kent State University where she earned BAs in Applied Conflict Management and Cultural Anthropology before earning her MDiv from Duke Divinity.

Statement of Faith

Rev. Howard Dudley

I seek to trust and follow Jesus Christ, the Son of the Living God, truly human and truly divine. He taught and lived as an example of unwavering love for God and neighbor, suffered the darkness of the cross, rose again in victory over all evil, sin, suffering, and death, and lives and reigns at God's right hand now and forever.

Jesus said the first great commandment is to “love God with all your heart, mind, and strength.” Therefore, our deepest identity is found not in what we do with our lives but in the God who entrusts us with life: the One from whom, through whom, and for whom all things live and move and have their being, who alone is holy and eternal, and whose steadfast love endures forever.

Jesus said the second great commandment is like the first: “Love your neighbor as yourself.” Therefore, our deepest purpose is to cherish and serve all people as treasures of the one true God, particularly in suffering. Just as Jesus did, we are called to work for the mending of the world's brokenness with companionship and compassion.

Tragically, humankind did not embrace the example of Christ but instead made an example out of him, violently rejecting him on the cross. Therefore, our deepest conviction is that we are all bound to sin. At our worst, we do harm to ourselves, to others, and to the life of the world. Even at our best, the world's brokenness proves too heavy to carry, too real to hide, and too deep to undo on our own.

Nevertheless, the cross was not the end of Christ, and neither will our sins be the end of us. Christ rose again from the dead, claiming victory over all evil, suffering, and death, once and for all. Therefore, our deepest hope is the unconditional promise of God that nothing can ever separate us from God's love, not even our own failure to embrace it.

When we trust in and rely on this unmerited, unconditional grace, the same love that lived in Christ Jesus, the very love of God, starts to come alive in us by the power of the Holy Spirit. We are at once humbled by the depth of our human brokenness and made grateful for the even deeper love of God. The Spirit of God moves within us, using our unique gifts and abilities for the love of God and our neighbor.

In faith, God brings us together as the church, the body of Christ, one body of many members, in regular worship and fellowship. God binds the church together in a covenant community through Christ's sacraments of baptism and the Lord's Supper. God continually guides the church through the authoritative witness of scripture, which proclaims God's promises in Christ. God sends the church into the world as bearers of Christ's hope and love.

As we grow in identity, purpose, conviction, and hope, we both work for and await the day when Christ's reign comes in fullness, when all that is sad comes untrue, when there is no hunger or thirst anymore, as every knee bows and tongue confesses that Jesus Christ is Lord to the glory of God.

Biographical Sketch

Rev. Howard Dudley

I am a child of New Hope Presbytery. I was baptized at Howard Memorial Presbyterian Church in Tarboro, and confirmed as a member at Wake Forest Presbyterian Church, where my family moved and joined in 1991. I attended East Carolina University, where I was an active leader at ECU's Presbyterian Campus Ministry, and graduated in 2007. I served in Youth Ministry at Howard Memorial for two years before attending Union Presbyterian Seminary, where I met my wife, Meg, who is also a Presbyterian pastor. We graduated in 2012, and took our first calls in Mississippi. I served as the Presbyterian Campus Minister at Ole Miss. In 2016, I was called to serve as the pastor and head of staff at First Presbyterian Church in Dunn, North Carolina, where I served for almost eight years before being called to the Kirk of Kildaire.

Statement of Faith

Rev. John Fawcett

I believe Jesus was born, he lived and taught, he died, and he got up. I believe the entire arc of the faith life of the believer is to unabashedly proclaim what that means in community with other seekers and questioners. I believe Christianity is not about conversion but convergence. It's about a shared experience and an opportunity to be cracked open by the word and Word to redeem that in ourselves which gives God joy and happiness.

I believe that we are all freed from sin, not trapped by it. I believe it is the job of the believer to confidently and counter-culturally live in this grace-filled reality and to be a holy agent for change and love in a world so often moving in the other direction. I believe it is the holy job of the church to stand firm and proclaim God to a broken world.

I believe God is simultaneously disclosed and mysterious. I believe God is small enough to come to us as an infant - barely bigger than a loaf of bread - to be held in all our arms in vulnerability. I believe in a close kinship with a Lord who knew what it felt like to have every human experience, every emotion, all the fear, the hurt, the grief, the vulnerability, the love, the joy, and the longing. I believe in a God with a heart so large it loves the world and at every given moment feels the heartbreak and joy of this creation.

As C.S. Lewis once said, I believe in the Holy Spirit like I believe in the sun – not because I can see it, but because by it I can see everything else. I believe the Holy Spirit is constantly on the move, looking to shake in excitement when believers step up and do brave things, much like in Acts 4:31 when the Spirit literally shook the room in which the disciples were praying.

I believe God's grace and forgiveness are so vast that a believer can spend a lifetime trying to understand it and that they are sheer gifts given by the Divine. I believe all Christians should live into joy as a forgiven people and live with purpose as a people daily renewed and liberated from sin.

I believe God is still speaking. I believe we're at a crossroads in the life of the church where it's time to jettison putting theological band-aids on wounds that need surgery.

I believe in a lifelong journey of discovering what Karl Rahner once called "faith on the way" as every believers' vocation. I believe we are constantly forming and reforming in our understanding of God. I believe in the unfinished aspects of my faith like the father in the gospel of Mark: "I believe, help my unbelief."

Statement of Faith

Rev. James M. Rand

Prayer is both source and product of faith. Jesus offered a model for prayer (Matthew 6:9-13); and worship in most Presbyterian worship settings would seem incomplete without reciting these words, though I personally often fail to think about the meanings in the moment. So I chose to annotate my faith through several free-association – i.e., non-academic – “riffs” on that prayer.

Our Father who art in heaven ...

God, of course, is not literally a male “father,” any more than heaven can be literally delineated on a map of the earth, planets, and/or stars. Heaven, rather, is a state of being, in which God presides, and within which, God, Jesus, and the Spirit come and go, always inviting others into this “fully human, fully divine” state of being.

Since neither “Father” nor “heaven” is literal or finite, I view “our” as the most important word in this opening phrase. “Our” introduces prayer as a communal endeavor, not personal or self-seeking. “Our” also offers a doorway to experience ekklesia-fellowship-church as a provisional expression of heaven. As a plural adjective, “our” binds pray-ers to the author of the prayer (Jesus) and to each other, much as water binds us in baptism. One cannot pray this prayer or truly embody the life of faith separate from these two prayer partners: Christ and community.

Not least, “our” has a missional aspect, inferring that every prayer – starting with this one – is done in behalf of all people and all creation.

Hallowed be thy name ...

Having begun to speak to God and about heaven, the prayer sets a trap! Just when we are start sounding glib and certain, we are slowed down with a reminder that God is holy – full of mystery beyond human comprehension. Faithfulness does not rely on having all the answers, but being surprised by joy, strengthened in suffering, and open to the unknown. Indeed, the “Name” (Jewish tetragrammaton, “YHWH”) is so revered that it is seldom spoken.

Thy kingdom come, thy will be done, on earth as it is in heaven ...

Despite all that is unknown, Jesus prays for God to be known – not in a rapture that removes Christ’s followers from the world – but by establishing a realm of divine peace and justice on earth. Just as God “walked in the Garden in the cool of the day” and sent Jesus to make Godself known in human flesh, my faith is “grounded” in earth and clay ... including the tomb.

For me, this is the crucial line of the prayer, and I bemoan the way congregations pause after “thy will be done.” The three phrases should be joined seamlessly, providing an impetus for works of mission, ministry, compassion, and justice “on earth” as ... in heaven”!

After calling for God to be known on earth, the prayer sets forth three tangible signs of the divine presence ...

Give us this day our daily bread ...

Wherever no one goes to bed hungry, God is near. And, “as often as bread is broken and shared” in his name (the Lord’s Supper), Christ is near.

Forgive us our debts as we forgive our debtors;

Where forgiveness is generously accepted (by us) so that we extend it to others, God is near.

“Bonus” reflection: To “give” and “forgive” are intimately linked to love of neighbor. It might be said that each action is a sign and requirement for the other. As Henry Van Dyke lyrics to “Joyful, Joyful, We Adore Thee” say, “Thou art giving and forgiving.”

Lead us not into temptation but deliver us from evil.

Where humans resist the urge to consume beyond their needs, and power is not used or sought after by taking from those who have less (or abusing earth’s bounty), God is near.

“Bonus” reflection (2): “Deliver” is undoubtedly Exodus language, intentionally chosen by Jesus to request God’s agency in ending political oppression. Church is not neutral or apolitical on such matters ... if we are praying with Jesus!

God’s governance and the measure of our lives are summed up in these lines. Yet I also find here a murky entrance to my “doctrine of sin”! Simply put: I glimpse an overlap between these three lines of the prayer, and Christ’s threefold rejection of Satan (Matt. 4).

- *The first petition envisions bread for all, thus joining Jesus in rejecting the devil’s claim that any individual might claim all the bread (and stony makings of it!) for oneself.*
- *The second petition, speaking of debts and forgiveness, denies the devilish urge to seek freedom through wealth alone (offered as control of all nations and glory). True freedom, rather, requires receiving and sharing heartfelt forgiveness.*
- *The third petition resists rash and reckless behavior (including leaping from the temple heights) by insisting that no one is immune to suffering. Not even Jesus. All will die. Even Jesus. Acting stupid or egocentric will not win anyone a get-out-of-jail-free card!*

(For thine is the kingdom, the power, and the glory.)

This final phrase was added by the church and is not present in Matthew 6. But when natural disasters, politics, economics, “social media influencers,” and internal fears seem to suck up all the air, these closing words invite us to trust the outcome, remember who is in charge, keep our focus, and live each day with courageous, comprehensive faith.

Amen.

Biographical Sketch

Rev. James M. Rand

I served churches in Wilmington, DE (6 years), Worcester, MA (8 years) and Wauwatosa, WI (24 years); was active on many presbytery committees, was a synod commissioner twice, and GA commissioner once.

I had an article published in the Journal for Preachers and wrote the exegetical and spiritual formation notes for the book of Daniel in the Renovaré Bible (2005).

In retirement, I guest preach occasionally. Outside of church, I have developed a variety of hobbies and pastimes – from active physical endeavors to quiet forms of inward reflection and engagement.

AN EVENING OF STORIES & SONGS *with* DAVID LAMOTTE

musician

speaker

author

Sunday, March 17
5:00pm

**HUDSON MEMORIAL
PRESBYTERIAN CHURCH**

4921 Six Forks Rd, Raleigh, NC, 27609

Fellowship & Refreshments Afterwards

**REGISTRATION OPENS
FEBRUARY 26**

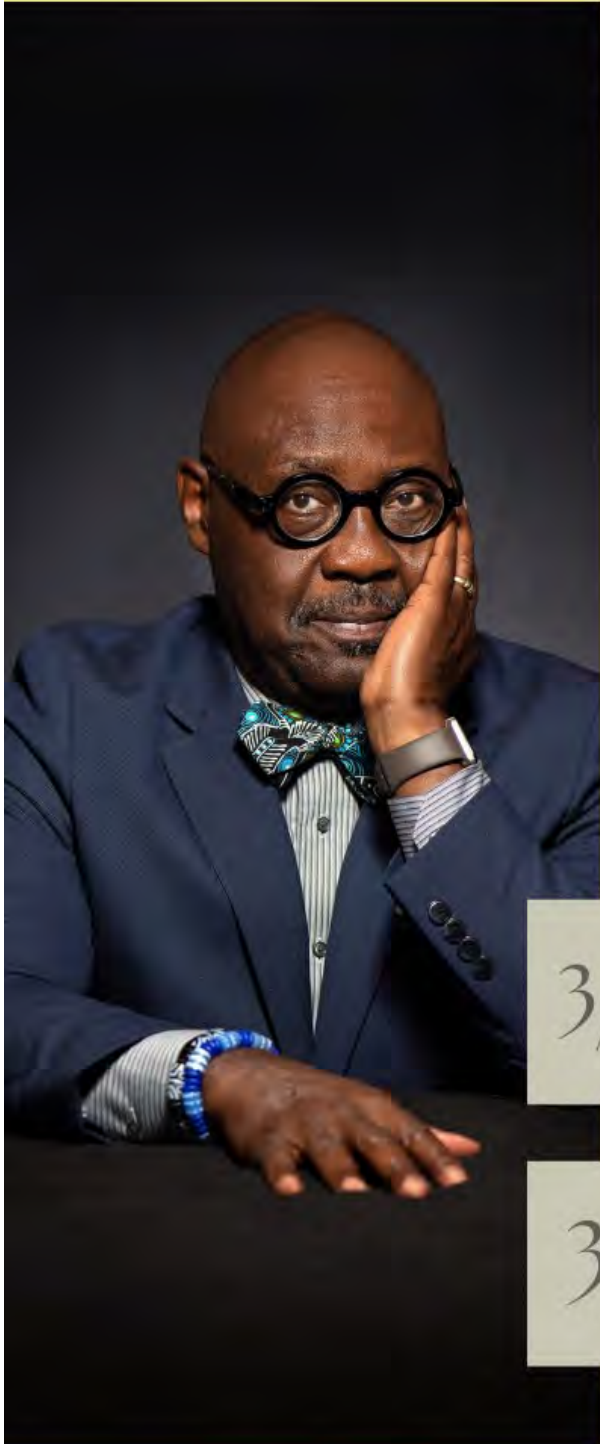
Registration link can be found
on 2/26 on the homepage of
hmpc.org



"David LaMotte has created a powerful antidote to the helplessness we often feel in a world that is overwhelming, in both its pain and its beauty. With seriously good cheer, he helps us think about how to engage this world with courage, grace, and hope, in the ways that are distinctly ours to do...his wisdom reminds us that as we do this, we are not alone."

- Jan Richardson, Minister, Artist, and Poet

LEARN MORE ABOUT ⁸⁵DAVID LAMOTTE AT
DAVIDLAMOTTE.COM



Save the Date

2024 McPherson Lecturer
Willie James Jennings, PhD

Dr. Jennings, Associate Professor of Systematic Theology and Africana Studies at Yale University, is author of *The Christian Imagination: Theology and the Origins of Race*, *Acts: A Theological Commentary*, and *After Whiteness: An Education in Belonging*.

3/10

9:45 Faith & Community Class
11:00 Worship Service
3:30 Community Conversation

3/11

9:00 am Clergy Breakfast

Nominations and Representation Committee

February 2024

The following nominations are submitted for approval

Associate Presbyterian for Small Churches and Technology Nominating Committee

Rev. Antonio Lawrence, Jr. Teaching Elder, Faith Presbyterian

Rev. Rocky Stone, Teaching Elder, Farmville

Leslie Spencer, Ruling Elder, 1st Presbyterian Wilson

Walter Beal, Ruling Elder, Nutbush

Kate Trimble, Ruling Elder, Western Blvd.

Campus Ministry

David Farris, Ruling Elder, 1st Presbyterian Rocky Mount

Class of 2026

Coordinating Body

Clifford Thomas, Ruling Elder, St. Paul Louisburg

Class of 2026

Rev. Haley Stephenson, Chaplain Duke VA Health

Class of 2026

Commission on Ministry

Rev. Kerri Hefner, Teaching Elder, New Hope Presbyterian Church

Class of 2024

Rev. Steve Schaick, Member-at-Large

Class of 2026

Philip Thomas, Ruling Elder, 1st Presbyterian Wilson

Class of 2026

Dan Blackshear, Ruling Elder, 1st Presbyterian Goldsboro

Class of 2026

Sue Blackshear, Ruling Elder, 1st Presbyterian Goldsboro

Class of 2026

Exams and Transfers

Rick White, Ruling Elder, White Memorial, Raleigh

Class of 2026

Rev. Jackie Rodriguez, Campus Minister Duke University

Class of 2026

General Assembly Commissioner

Mary Mabry, YAAD, North Raleigh

Milner Commons Task Force

One Representative from

Davie Street, Raleigh, Open

Raleigh First, Richard Boyette

Hudson Memorial Raleigh, Open

West Raleigh, Open

White Memorial, Raleigh, Tom Robinson

Permanent Judicial Committee

Rev. Vanessa Hawkins, Teaching Elder, Davie Street

Class of 2029

Rev. Kerri Hefner, Teaching Elder, New Hope Presbyterian Church

Class of 2029

Preparation for Ministry Committee

John Etheredge, Ruling Elder, 1st Presbyterian Rocky Mount

Class of 2026



Servant Leadership is defined in ways as unique as we each are. Some Christians will continue to serve in the same capacity, year after year. Other Servant Leaders will be involved in different ministries and in different roles over the course of their walk of faith. As a Ruling Elder or Teaching Elder, we invite you to consider sharing your insights and energies on a New Hope Presbytery Committee or Commission. The groups described within seek to support our member churches. Committee mission and meeting time vary. Most meet several times a year. A term is normally three years. The friendships may last a lifetime. Join us!

Nominations and Representation Committee Members—2024

Ray Watson, Moderator
919-48-4715
nrwjr@mindspring.com
White Memorial, Raleigh

Travis Allen
252-521-7496
pastortravis86@gmail.com
First Presbyterian Church, Kinston

Felecia Hardy
919-264-5367
jamecia333@aol.com
St. Paul Presbyterian Church, Louisburg

David Huffman
919-624-4471
dchuffyman1972@gmail.com
Honorably Retired

Otto White
919-928-0068
oehal@aol.com
Covenant Presbyterian Church, Durham

Jordan Davis
919-332-2142
jordan@saintgiles.org
St. Giles Presbyterian, Raleigh

Ed Johnson, Committee Staff
919-322-0143 ext. 854
ejohnson@nhpresbytery.org
The Presbytery of New Hope

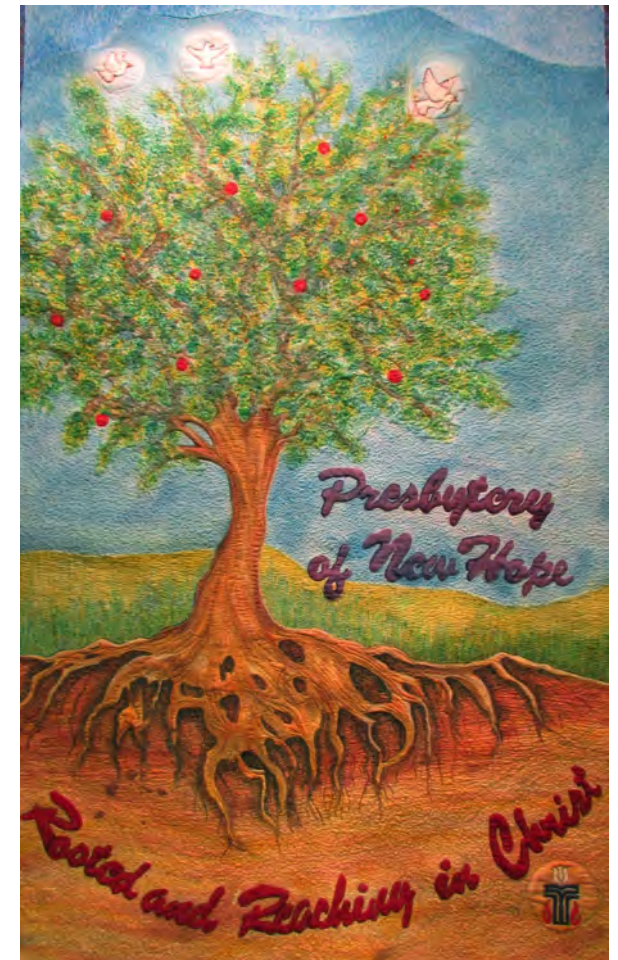
The Presbytery of New Hope

2022 McDonald Lane
Raleigh, NC 27608
Phone: 919-322-0143
Fax: 919-322-0148

www.nhpresbytery.org/nominations-form
nominations@nhpresbytery.org

The Presbytery of New Hope

Committee on Nominations and Representation



Commissions and Committees of The Presbytery of New Hope

Campus Ministry Committee (CMC) Responsibilities include allocation and financial oversight of financial resources to the 5 campus ministries connected to the Presbytery, enabling and encouraging the campus ministries to work and to meet together, and promoting and advocating campus ministries in the Presbytery. Meets online 2-4 times per year on a schedule that is established at the beginning of the year by the committee. Useful Skills: love of young people, passion for campus ministries, financial sense, organizational skills, and advocacy skills.

Church Development and Evangelism Committee (CDE) Responsibilities include supporting new church startups and providing opportunities for churches to deepen their commitment to evangelism. Meets bi-monthly at 10AM on the 2nd Thursday in Jan, Mar, May, Sep, and Nov. Useful Skills: knowledge of 1001 New Worshiping communities, an openness to new forms of ministry, and interest in exploring new models of church for the 21st century.

Commission on Ministry (COM) The committee provides the care for clergy, educators, sessions, and congregations. Responsibilities include oversight of Interim, Supply and Temporary relationships, approval of Pastoral calls, oversight of Commissioned Ruling Elders, oversight of congregations without Teaching Elders, visits with Sessions and Pastors. Members serve on one subgroup: Conflict Transformation, Ministers at Large, Interim Ministry, and Transitional Ministry. Meets on 2nd Wednesday monthly except Apr, Aug, and Dec, usually in White Memorial education building. Two meetings annually are held east and north of Raleigh. Useful skills: knowledge of PC(USA) polity, experience with churches in transition.

Committee on Preparation for Ministry (CPM) The committee guides and supports Presbytery members who feel called to serve as Teaching Elders. The process includes the individual’s development from Inquirer to Candidate ready to receive a call by meeting Book of Order and Presbytery requirements. Meets on the 1st Thursday monthly at White Memorial education building and other brief regional meetings, as needed. Useful skills: knowledge of PC(USA) polity, knowledge of CPM manual, being a good listener.

Coordinating Body (CB) Responsibilities include coordinating the mission and program of the Presbytery, offering leadership by setting broad, overall Presbytery goals, serving as Trustees and legal officers of the Presbytery, approving plans for Presbytery Gatherings, providing leadership through proposals and/or recommendations to the Presbytery as well as its committees and commissions. Meets monthly from 1:00-3:00 on the 3rd Wednesday except the months when a Presbytery Gathering is held. (Feb, Jul, and Oct) Useful skills: Past experience on Presbytery committees or commissions, commitment to the mission and work of the Presbytery.

The Disaster Assistance Team (DAT) is focused on Readiness and Recovery. The team advocates advanced planning for member churches for natural and man-made disasters believing that written and communicated disaster plans are essential. If a disaster strikes, the team acts as an interface with state and local authorities and with the national Presbyterian Disaster Assistance Agency to coordinate volunteer efforts and also request funding to assist affected communities. The team meets periodically at called meetings and through phone and video calls.

Examinations and Transfers Sub-Committee (ETSC) This is a sub-committee of COM and is charged with examining candidates for ordination and Teaching Elders who are transferring into New Hope Presbytery. Meets at 9AM the 2nd Tuesday of each month (except Dec) at White Memorial or on the 1st Tuesday of a month that begins on a Wednesday. Useful skills: interest in getting to know incoming pastors and candidates for ordination, willingness to engage in in-depth conversations about Reformed Theology, Polity, Worship and Sacraments and Scripture, and willingness to read and reflect on Statements of Faith.

Finance and Property Committee (FPC) Responsibilities include a proposed annual Presbytery budget, oversight of Presbytery funds, investments, debt retirement, and expenditures, and oversight of management of properties under direct control of Presbytery. Meets on the 2nd Monday of the month from 10:00-12:00 in Feb, Apr, Jun, Aug, Sep, and Nov. Useful skills: financial management, accounting, real estate, legal background, business operations management.

Nominations and Representation Committee (NRC) include identifying individuals to serve on Presbytery committees and filling vacancies as needed. Representation function seeks to intentionally include racial/ethnic minorities in service and leadership roles. Meets 3-4 times per year, or more if needed. Useful skills: knowledge of Presbytery committees and commissions, broad knowledge of Ruling and Teaching Elders in the Presbytery.

Permanent Judicial Commission (PJC) include offering guidance for remedial or disciplinary cases that come before the Presbytery. Meets at the call of the Commission Moderator. Useful skills: knowledge of civil and church law, conflict resolution.

Personnel Committee (PC) Responsibilities include annual personnel reviews, proposed salary schedules for Presbytery employees, and compliance with Presbytery personnel policy. Meets quarterly at the Presbytery office or White Memorial education building. There is no set meeting date. Useful skills: personnel or HR experience, knowledge of PC (USA) polity and Presbytery personnel rules.

Self-Development of People (SDOP) Founded as a response to racial and ethnic inequities, the SDOP invests in local communities who develop and administer programs of education and social action. Funded by One Great Hour of Sharing offerings, the committee reviews and approves grants of up to \$5000 and monitors their implementation. SDOP meets about 4 times a year, mostly July-Dec when grant requests come in. It is a minority majority committee.

Nominations Form The Presbytery of New Hope

Name of Nominee: _____

Address: _____

City/State/Zip: _____

Preferred Phone: _____

Email: _____

Congregation/Church: _____

___Minister ___Elder

___Gender ___ Ethnicity/Race

Committee or Commission for Nomination:
(please see descriptions under Commissions and Committees of The Presbytery of New Hope)

- | | | |
|--------|---------|---------|
| ___CMC | ___CB | ___NRC |
| ___CDE | ___DAT | ___PJC |
| ___COM | ___ETSC | ___PC |
| ___CPM | ___FPC | ___SDOP |

Referred by: _____

Milner Commons Redevelopment

Update for February 2024

The Presbytery of New Hope, DHIC, and Brightspire continue to celebrate the transformation of Milner Memorial Presbyterian Church into Milner Commons.

As a reminder, this is a 4.6-acre site that is being redeveloped into 156 units in two buildings with a mix of efficiency, one-bedroom, and two-bedroom units of affordable housing for individuals aged 55+ of modest means. All of the units will be affordable to seniors earning less than 60% of the area median income, 10% of the units are reserved for seniors with incomes of 30% of the area median income or less, and another 10% are reserved for persons with disabilities or formerly homeless transitioning to permanent housing.

Looking towards New Bern Avenue.
Everything is starting to take shape!



The community will feature covered walkways, common laundry facilities along with laundry hook-ups in each unit, computer centers for residents, community gathering rooms with kitchen, tenant storage areas, indoor and outdoor sitting areas, patio/porches, and an on-site management office in both buildings. In addition to an outdoor seating area for residents, the community will include a fitness center, multi-purpose room, and onsite services to help residents age in place in their new apartments. The property is along the New Bern Avenue Bus Rapid Transit (BRT) corridor, so residents will have easy access to downtown Raleigh and medical services at WakeMed.

This community wouldn't be possible without many key partnerships. With membership on the decline, the congregation decided to disband, and it was important to the members of Milner Memorial that the land, donated by Henry Herman Milner in 1953, remain a place where serving the community is celebrated. After much discussion, it was decided that the congregation would dissolve and the land would revert to the Presbytery of New Hope with the understanding that it would be used for affordable housing for seniors of modest means.

DHIC and Brightspire are excited about the opportunity to honor the history of Milner Memorial while enhancing the lives of seniors in the Southeast Raleigh neighborhood. The Milner Memorial

Presbyterian Church sanctuary was designed by well-known Raleigh architect, F. Carter Williams and we are committed to using elements from the original building in the new design.

Ms. Strampe, explains, “We wanted to incorporate the church’s history into the new development, so we’ll repurpose the brick, the pews, and the stained-glass windows from the sanctuary in the new buildings.”



Repurposed brick incorporated into the design in one of the common areas.



Repurposed stained glass incorporated into the design of one of the hallways.

The community’s name, “Milner Commons,” is in memory of Henry Herman Milner, who is buried on the property.

The two buildings are connected by an outdoor walking path with benches for relaxing. The residents will have access to supportive service coordination provided by Resources for Seniors to help them age in place as long as possible. Milner Commons is projected to be complete in the late Fall of 2024.

Stayed tuned for more updates as we move towards completion.



Elizabeth Little
Church Consultant

m: 252-723-8653

elittle@pensions.org

January/February 2024

We at the Board are working hard to support our ministers and employees of the Presbyterian Church (USA) in new and creative ways. If you have other ideas about how we can help, please let me know. I am happy to meet with presbytery and church committees to listen to your thoughts and hopes of how we can strengthen the benefits offered to those who serve the Church.

The Board of Pensions is a national agency of the Presbyterian Church (U.S.A.), offering a broad range of benefits to PC(USA) churches, agencies, and mid councils, as well as affiliated employers.

Member/Employer Services: 800-773-7752, M-F 8:30 am to 6:00 pm ET

A Season of Rebuilding

The Board of Pensions is assessing and restructuring the Benefits Plan of the Presbyterian Church (U.S.A.) to meet the needs of a changing Church. Our goal is to provide more flexibility and cost control for congregations as they care for the well-being of their pastoral leadership. Our hope is for all ministers and employees in the PC(USA) to be plan members. The Board of Directors will vote on a new Benefits Plan structure in early March. [Read about recommendations for the new plan.](#)

New Benefits Connect system now available

The new Benefits Connect system offers enhanced features and updated design and navigation to benefit church employers as well as individual members, both active and retired. Every user must register a new login for the new Benefits Connect. We encourage members and church employers to do so as soon as possible. Any who need assistance with the new system should contact Member or Employer Services, at 800-773-7752. An updated [employer guide for Benefits Connect](#) is available.

Other important information:

The Assistance Program: As part of our commitment to mutual care and wholeness, the Board of Pensions continues to expand access to the Assistance Program to serve more ministers, employees, retirees, and surviving spouses who have financial need. [Read about potential grant opportunities.](#)

Remember to update Effective Salaries for the new year: Any changes to effective salaries must be reported to the Board of Pensions via Benefits Connect within 60 days of the effective date. Details about forms of compensation included in effective salary are found in [Understanding Effective Salary.](#)

New Medicare Advantage Plan with Humana has launched: The new plan replaced the former Medicare Supplement Plan for retired members, effective January 1, 2024. We anticipate potential expansion of eligibility in January 2025. [Read more about the Medicare Advantage Plan.](#)



MATTHEW 25 SUMMIT

On Martin Luther King, Jr. Day 2024, six leaders of the New Hope Presbytery set out from Western Boulevard Presbyterian Church for Atlanta and the Matthew 25 Summit (Bruce Grady, Executive Presbyterian of the NHP; Vanessa Hawkins, interim pastor at Davie Street; Amy Simes, candidate for ministry; Joe Burmester, Executive Director of Loaves and Fishes and member of Western Boulevard; Sarah McCracken Cobb, member of the Mission, Peace, and Justice committee at West Raleigh; and Jay Cummins, ruling elder at Hudson Memorial).



Our group of six at lunch on the way to Atlanta

The Matthew 25 movement calls us to actively engage the world around us, and act boldly and compassionately to serve those marginalized and in need (those who are poor, hungry, thirsty, naked, sick, imprisoned, and strangers).

The Summit was designed to bring together mid-councils, church leaders, and individuals to explore the vision of eradicating poverty, dismantling structural racism, and building vital congregations.

On January 16 we were joined by 9 other members of New Hope (including members of St. Andrews, Covenant Presbyterian Durham, and Fuquay Varina Presbyterian) at New Life Presbyterian in South Fulton, Georgia, a predominantly African American church, where the Summit was held. There were over 350 participants from around the US including quite a large contingent from our Mid-Atlantic Synod.



New Life Presbyterian Sanctuary

Each day, spirit filled worship and keynote speakers focused on one of the three key pillars of Matthew 25, workshops delved into foci and intersectional priorities, and dedicated participant feedback sessions (“fireside chats”) provided idea sharing.

These sermons, plenaries, and workshops were designed to raise awareness for issues of justice and fairness while providing clarity, context, and connectivity around the movement. PCUSA provided up-to-the-moment news coverage throughout the event, archives of which can be found at www.pcusa.org (including recordings of worship and plenary sessions).

The workshops provided in-depth insights into topics relevant to the movement and were led by experts with hands-on experience in the field. A sample of these included:

- What does God have to do with inclusion?
- Strategic Vision – casting for change.
- The role of white voices in anti-racism.
- What does it mean to be a vital congregation?
- Using Presbyterian polity as a decolonizing practice.
- Learning from the fullness of church history.
- Militarism in an age of insecurity.
- Climate justice, the church, and ideas for action.
- Just to name a few...



Vital Congregations Workshop

Some of the things that we learned from the experience included:

- The history and background of Overture 1103 which ultimately became Matthew 25 gives an excellent context for understanding the movement.
- The movement is a marathon not a sprint.
- Practice listening and patience when explaining Matthew 25.
- Understanding a church's context is the first step – defining the current state.
- The importance of understanding terminology to foster best communication in the context of inclusion.
- Letting go of an “us versus them” mentality when dealing with those of different gender, culture, or race.
- Fight poverty not the poor. Getting at and addressing the systems will help poor people the most.
- Radical welcome...when welcoming others that are marginalized, we are welcoming Christ.
- Vital congregations need to engage in the community.
- There are tools for assessment available through the PCUSA office of vital congregations.
- Matthew 25 is a matter of the heart.
- We don't need to be exceptional, just faithful.
- We are united by the gospel and by the imperatives of Jesus Christ.
- Growth will happen through conflict and challenge.
- There is not one kind of Matthew 25 church.
- It's going to take hard work to figure things out.
- Most importantly the work priority is Christ centered and faithful to the gospel.

There are some extraordinary people from our Presbytery, Synod, and denomination. The work that is going on in our New Hope Presbytery churches is outstanding. The Presbytery is prioritizing creating and

promoting communication tools between member congregations to share and celebrate this work that addresses “the least of these”.



The Mid Atlantic Synod participants

Our group left energized, enthused, and activated to work on positive change in our communities. We committed to reconvening as a leadership group within the Presbytery (and as of this writing have held multiple meetings) to discuss best practices and next steps. The Presbytery is working on a strategic plan which Matthew 25 will be a central part of, as well as “mini summits” in conjunction with the July and October NHP meetings at Westminster Durham and Hudson Memorial in Raleigh. This will be elaborated upon at the February Presbytery meeting in Cary.

Recognizing that all congregations are different and are in various stages of discernment/commitment we encourage all to continue the work that’s been started, and develop action plans from there that lead us to living into our mission to know, love, and serve God in Jesus Christ.

Bills and Overtures/Resolutions

Process for Submitting Overtures and Resolutions for Presbytery's Consideration

Overtures: Overtures come from one council (session, presbytery, synod) requesting that a higher council takes an action or approves/endorse a particular statement or resolution.

Resolutions: A resolution for new business comes from a member or committee of a council, asking that the council takes a particular action or approves/endorse a particular statement.

Timetable: Session overtures/resolutions to presbytery for consideration should ordinarily be submitted to the stated clerk at least 60 days prior to a presbytery meeting day. The stated clerk shall forward the overtures/resolutions to the Bills and Overtures Committee for its action. If needed, the Bills and Overtures Committee has the right to meet with the session or presbytery committee to discuss the rationale for the overtures/resolutions prior to the presbytery gathering for consideration.

If at least two members of the Bills and Overtures Committee are not available at the presbytery gathering when overtures/resolutions are to be presented, the moderator may provide for a temporary Bills and Overtures Committee of at least three persons for the duration of the meeting. If any members of the standing Bills and Overtures Committee are present, they shall be included along with the temporary committee.

Coordinating Body shall include overtures and prepared responses of the Bills and Overtures/Resolutions Committee in the presbytery handbook for commissioners.

Concurrences: A concurrence is itself an overture and shall follow all the guidelines mentioned above for the consideration of overtures to presbytery. A concurrence may also happen unintentionally, when the content of an original overture essentially matches that of another presbytery. In that case the stated clerk of the General Assembly may group the similar overtures together as “concurring overtures.”

How to Submit an Overture/Concurrence to General Assembly

A. Overview

The guidelines for presenting overtures are found in the Manual of the General Assembly, Standing Rule A.3. The key provisions are:

- Overtures must be approved by a presbytery or a synod and shall request the General Assembly to take a particular action or approve or endorse a particular statement or resolution.
- Overtures must be timely submitted to the Office of the General Assembly (see G. below).
- The originating presbytery or synod may appoint an overture advocate (see section E. below).

B. Researching the Overture

Standing Rule A.3.b. and A.3.c.(5) require that the stated clerk of a presbytery or synod considering an overture to the General Assembly shall:

- Examine the most recently published *Minutes* of the General Assembly to determine if a similar overture has already been passed;
- Consult with the Office of the General Assembly to determine whether the desired action has been voted on by any previous General Assembly;
- Consult with the Office of the General Assembly to determine whether a similar overture has already been proposed for the current year. If so, the presbytery or synod will be encouraged to concur with that overture.
- Presbyteries or synods submitting overtures with a recommendation(s) that affects the work or budget of a General Assembly entity(ies) shall submit evidence that the affected entity(ies) has (have) been consulted. If such evidence is not submitted, the stated clerk shall recommend that the overture be received and referred to a future session of the General Assembly so that consultation may take place.

These procedures are designed to ensure better communication in conceiving and writing recommendations considered at the assembly. The consultation may take place by fax, phone, mail, or personal conversation.

C. Format of the Overture

Recommendation Section

“The Presbytery [or Synod] of _____ overtures the 226th General Assembly (2024) to”

The recommendation section should be worded with specific, concise directives so that the General Assembly can make a clear, informed decision, and so that financial implications, if any, can be accurately assessed.

Rationale Section

The rationale section should be as concise as possible, and provide insight into the reasons for the recommendation. Material included in the rationale is for information only and is not a part of the action of the assembly. Tell the reader, in short paragraphs, what is the problem, what is the harm, why the current rule or program is not adequate, what is needed.

D. Submitting the Overture

The overture may be submitted electronically, preferably in Word, to kay.moore@pcusa.org. Please do not submit PDFs as OGA staff must edit and format the overture. Submitting the overture electronically eliminates the necessity of OGA staff rekeying the overture. If electronic submission is not feasible, a fax copy is acceptable. Please fax to 502-569-8642. Remember that the receipt of all overtures in OGA will be acknowledged by letter. If an acknowledging letter is not received within a few weeks after submission, please check with Kay Moore at kay.moore@pcusa.org or 888-728-7228, extension 5418, to ensure that the overture has been received.

E. Overture Advocate

Each presbytery or synod submitting an overture may name one overture advocate. The overture advocate must be able to be available at the General Assembly to provide information on the background and intent of the overture to the assembly committee to which the overture is referred (Standing Rule A.3.e.; see also Standing Rule E.2.e. “Privilege of the Floor”). Be aware that naming a commissioner as an overture advocate will most certainly require that the commissioner will be taken away from their assigned assembly committee business to go to another assembly committee to advocate for the overture. In the letter acknowledging receipt of the overture, the OGA will request overture advocate information. Please provide the name of an overture advocate as soon as possible. Several weeks before the convening of the General Assembly, the OGA will correspond with all overture advocates. The overture advocates receive information identifying the item number and title of the overture they will be advocating, the assembly committee to which the overture is referred and the location of the meeting room in the convention center, and the names of the leadership of the assembly committee. The OGA provides orientation for overture advocates at the General Assembly before the assembly committees meet.

F. Concurrences

The 220th General Assembly (2012) approved a recommendation from the Committee to Review Biennial Committees (*Minutes*, 2012, 72, 241) that requested amendment to the *Book of Order* (G-3.0302). The amendment required that overtures referred to the General Assembly have a concurrence from at least one other presbytery. Overtures not receiving a timely concurrence will not be referred to the General Assembly.

G. FAQs on Overtures/Concurrences

What do the *Standing Rules* say about concurrences?

Section A.3.c.(6) of the *Standing Rules* defines a concurring overture as one “similar to one already proposed (excluding rationale),” and gives instructions for how the stated clerk is to respond. This section also makes it clear that concurrences must meet **the same deadlines for submission** (120 days before the assembly for constitutional matters, 45 days before the assembly for all other business) that all overtures must meet.

What has changed about concurrences?

The 220th General Assembly (2012) added a requirement that all overtures from presbyteries will require at least one concurrence in order to be considered. The following language was added to the responsibilities of presbyteries in the *Book of Order* “... proposing to General Assembly overtures that have received a concurrence from at least one other presbytery ...” (G-3.0302d).

Must a concurrence have exactly the same words?

For constitutional amendments it is expected that the effected constitutional language be exactly the same. For other business it is encouraged that the language be the same or analogous enough to be judged “similar” by the stated clerk.

Do the rationales have to be the same?

The rationale does not need to be the same, and many presbyteries use a concurrence to offer additional rationale for an item of business. The rationales for all concurrences are included with the overture when presented to the assembly.

Who is responsible for ensuring that an overture has concurrences?

The Office of the General Assembly will not solicit concurrences. Presbyteries are encouraged to contact other presbyteries to consider concurring with their overtures. Also upon receipt of the regular update of overtures from the Office of the General Assembly, presbyteries may identify overtures for possible concurrence.

Why don’t overtures from synods need a concurrence?

The rationale for the original action requiring concurrences explained that an overture from a synod contains, by definition, the support of several presbyteries whose commissioners to the synod adopted the overture.

Who brings an overture to a presbytery for concurrence?

Every presbytery has a different process for bringing business before the council. Concurrences would be treated as a normal item of business.

May a presbytery simply vote “to concur” with a particular overture, or must they vote on the overture itself?

A vote to concur is an acceptable way for a presbytery to offer a concurrence and is reported to the stated clerk as “At its (date of meeting) the Presbytery of (blank) voted to concur with overture (number and name of overture).” Any additional rationale may be attached.

If our presbytery concurs with another presbytery’s overture, do we name an overture advocate?

A presbytery or synod that concurs with an overture from another presbytery or synod may send one overture advocate to assist in presenting the matter to the assembly committee.

H. Deadlines for General Assemblies Are as Follows:

180-day deadline: Names of commissioners and young adult advisory delegates from presbyteries.

120-day deadline: Overtures requesting amendment to or interpretation of the *Book of Order*. These overtures are then automatically referred to the Advisory Committee on the Constitution for advice to the General Assembly (see G-6.04).

60-day deadline: Overtures having financial implications for current or future budgets.

45-day deadline: All other overtures.

Overtures not timely received will be returned to the originating council.

226th General Assembly: June 25 – July 4, 2024

- Assembly committee meetings June 25-27 will be conducted online using Zoom and PC-Biz (the online platform for assembly business).
- Plenary business meetings from June 29-July 4 will be held in person at the Salt Palace Convention Center in Salt Lake City, Utah.

PARLIAMENTARY PROCEDURES FOR THE PRESBYTERY OF NEW HOPE

(This page is intended to provide a common understanding of parliamentary procedures for our presbytery meeting. The same procedures apply to session or congregational meetings.)

Protocol in our presbytery meetings requires that each time a person desires to speak:

- the speaker obtains recognition by the moderator prior to speaking.
- the speaker moves to a microphone to be heard.
- the speaker identifies him/herself by giving his/her name and congregation.
- then, the speaker is able to do one of the following:

Motion:

“Mr./Madam Moderator, I move that...” A motion requires a second unless it comes from a presbytery board or committee.

Amend a Motion:

“Mr./Madam Moderator, I move to amend the main motion by adding (state place in motion); **or** by striking these words in the main motion.”

Table a Motion:

“Mr./Madam Moderator, I move to table the motion under consideration.” The motion requires a second. There can be no debate. The body votes to stop debate on the particular motion. The motion to table may include a date for reconsideration of the motion again.

Refer a Motion:

“Mr./Madam Moderator, I move that the motion be referred to _____ committee.” The motion requires a second. The motion may be debated. The motion is always in order.

Call the Previous Question:

Mr./Madam Moderator, ‘I move the previous question’ **or** ‘I call for the question.’” Requires a second. Requires moderator’s recognition before it is valid. Is not debatable. It is a way for the body to see whether or not enough debate has occurred and the body is ready to vote. If the motion is approved, then the body votes on the previous motion under discussion. If the motion is defeated, the body returns to continue the debate.

Division of the House:

“Mr./Madam Moderator, I call for a division of the house.” This request does not require a second and is done as a courtesy to ensure that the moderator has heard the voice vote accurately. The moderator may test by show of hands or rising the support for each side of the question. In light of that test, the vote may be counted.

Motion to Reconsider:

“Mr./Madam Moderator: I move that we re-consider the motion about _____.” The motion must be made by a person on the prevailing side. The motion requires a second. It is debatable. If approved, then the body will re-consider a motion which has already been considered and voted on at that meeting.

Desire to Withdraw a Motion:

“Mr./Madam Moderator: I request that my motion be withdrawn.” If the motion has been placed on the floor for consideration and debate, the body must decide whether or not the motion can be withdrawn. A consensus or a vote is required to have the motion withdrawn; it cannot just occur because the maker of the motion desires to withdraw it.

Order of the Day:

An item of business scheduled for a particular time during the meeting. When the appropriate time arrives, the body proceeds to consider the order of the day, returning to the normal business after having had the order of the day.

Nominations:

Nominations may be made from the floor and are always in order for positions within the presbytery. Before a person's name can be considered, he/she must have given consent.

Point of Order:

“Mr./Madam Moderator, point of order.” Then, ask your question for clarification. Point of order does not debate a motion, but is for clarification.

| CHART #1 | | | | | | | CHART #2 | | | | | | |
|---|-------------------------------------|------------------|----------------|----------------|------|----------------------------|---|------------------|----------------|----------------|----------|---------------------|--|
| RANKING MOTIONS and their five salient parliamentary points. The order in which the thirteen motions are listed. FIVE PRIVILEGED MOTIONS | | | | | | | NON-RANKING MOTIONS- and their five salient parliamentary points. These motions (incidental motions have no rank among themselves.) Their being in order depends upon their necessity at the time. | | | | | | |
| | | | | | | | | | | | | | |
| | | Must be seconded | May be debated | May be amended | Vote | May be reconsidered | | Must be seconded | May be debated | May be amended | Vote | May be reconsidered | |
| | | 1 | 2 | 3 | 4 | 5 | | 1 | 2 | 3 | 4 | 5 | |
| 13. | To Fix the Time to Which to Adjourn | Yes | No | Yes | Maj | Yes | Appeal | Yes | ** Yes | No | Maj | Yes | |
| 12. | To Adjourn | Yes | No | No | Maj | No | Suspend Rules | Yes | No | No | 2/3 | No | |
| 11. | To Take a Recess | Yes | No | Yes | Maj | No | Point of Order, Call to Order | No | No | No | Mod | No | |
| 10. | Question of Privilege | No | No | No | - | No | Objection to Consideration of a Question | No | No | No | 2/3 | Yes No Vote | |
| 9. | Call for Orders of the Day | No | No | No | - | No | Requests | No | No | No | Maj | No | |
| SEVEN SUBSIDIARY MOTIONS | | | | | | | | | | | | | |
| 8. | Lay on Table | Yes | No | No | Maj | No | Division of Assembly | No | No | No | - | No | |
| 7. | Previous Questions | Yes | No | No | 2/3 | Yes | To Read a Paper | Yes | No | No | Maj | Yes | |
| 6. | Modify Debate | Yes | No | Yes | 2/3 | Yes | To Withdraw a Motion (to be used only before debate) | No | No | No | Maj | Yes No Vote | |
| 5. | To Postpone Definitely | Yes | Yes | Yes | Maj | Yes | To Divide the Question | Yes | No | Yes | Maj | No | |
| 4. | To Commit or Recommit | Yes | Yes* | Yes | Maj | Yes | To Close Nominations or Polls | Yes | No | Yes | 2/3 | No | |
| 3. | To Amend | Yes | Yes | Yes | Maj | Yes | To Consider Seriatim | Yes | No | Yes | Maj | No | |
| 2. | Postpone Indefinitely | Yes | Yes | No | Maj | Yes Affirmative only | TO UNCLASSIFIED MOTIONS | | | | | | |
| 1. | MAIN MOTION | Yes | Yes | Yes | Maj | Yes | Reconsider | Yes | ** Yes | No | # Maj | No | |
| Example of Incidental Main Motions; rescind, ratify, amend by-laws | | | | | | | To Take from the Table*** | Yes | No | No | Maj | No | |
| * only re. desirability of referral or details of referral. The merits of the question cannot be debated. | | | | | | | Rescind | Yes | Yes | Yes | * Yes | Neg | |
| | | | | | | | # same Presbytery meeting | | | | | | |
| Neither the chart nor references are inclusive but are to be used as an abridgement of Robert's Rules of Order, Newly Revised. | | | | | | | * with previous notice | | | | | | |
| | | | | | | | *** before the end of the next regular Presbytery meeting | | | | | | |
| | | | | | | | ** if main motion is debatable | | | | | | |

Presbytery of New Hope Guide to Acronyms

| | |
|---------|--|
| AC | Administrative Commission |
| AOP | Associate Pastor |
| APCE | Association for Presbyterian Christian Education |
| APNC | Associate Pastor Nominating Committee |
| BOC | Book of Confessions |
| BOO | Book of Order |
| BPC | Black Presbyterian Caucus |
| CD&E | Church Development and Evangelism |
| CHAPL | Chaplain |
| COM | Commission on Ministry |
| CM | Campus Minister |
| COR | Committee on Representation |
| CPM | Committee on Preparation for Ministry |
| CRE | Commissioned Ruling Elder (formerly CLP, Commissioned Lay Pastor) |
| DP | Designated Pastor |
| E&T | Examinations and Transfers Sub-Commission |
| EP | Executive Presbyter |
| F&P | Finance and Property |
| FOG | Form of Government |
| GA | General Assembly |
| HR | Honorably Retired |
| I | Interim |
| LOB | Laboring Outside Bounds |
| LWB | Laboring Within Bounds |
| MAL | Member at Large |
| MDP | Ministry Discernment Profile |
| MOM | Ministries of Mission |
| NCD | New Church Development |
| NHP | New Hope Presbytery |
| OA | Older Adults |
| OGA | Office of the General Assembly |
| P | Pastor |
| PA | Parish Associate |
| PC(USA) | Presbyterian Church (USA) |
| PDA | Presbyterian Disaster Assistance |
| PDP | Personal Discernment Profile |
| PJC | Permanent Judicial Commission |
| PMA | Presbyterian Mission Agency |
| PNC | Pastor Nominating Committee |
| PW | Presbyterian Women |
| SDOP | Self-Development of People |
| SS | Stated Supply |

PRESBYTERY OF NEW HOPE

STAFF CONTACT SHEET

Rev. Katie Cashwell

Temporary Associate Presbyterian for
Small Church Ministries and
Church Technology

kcashwell@nhpresbytery.org

919-348-2803

Rev. Bruce Grady

Executive Presbyterian

bgrady@nhpresbytery.org

919-348-2918

Rev. Ed Johnson

Temporary Stated Clerk

ejohnson@nhpresbytery.org

919-710-8608

Christine Kelson

Office Manager

ckelson@nhpresbytery.org

919-322-0144

Shauna Villela

Office Administrator

svillela@nhpresbytery.org

919-322-0147

Amber Zapffel

Temporary Financial Administrator

finance@nhpresbytery.org

919-436-1262

PRESBYTERY OF NEW HOPE

Publications, Publicity, and Table Display Policy

Only the following entities and organizations shall be entitled to request

- (a) the inclusion of written announcements or communications on the official Presbytery of New Hope website (www.nhpresbytery.org), in e-mail notifications, or e-newsletters distributed by presbytery staff, or in other publications prepared and distributed by presbytery staff, or
- (b) announcements to be made orally at meetings of the presbytery, table displays at presbytery meetings, and other events sponsored by the presbytery.
 - 1. Agencies, committees, and commissions which report directly to the Presbytery of New Hope or a council of the Presbyterian Church (U.S.A.) above the Presbytery of New Hope.
 - 2. Organizations and projects which relate to an agency, committee, or commission described in item 1 above and whose staff and funding are provided for by the Presbytery of New Hope or a council of the Presbyterian Church (U.S.A.) above the Presbytery of New Hope.
 - 3. The docket for each meeting of the Presbytery of New Hope shall include this statement: "The displays you see at any given presbytery meeting may or may not be endorsed by the Presbytery of New Hope."